
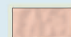
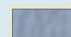


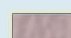
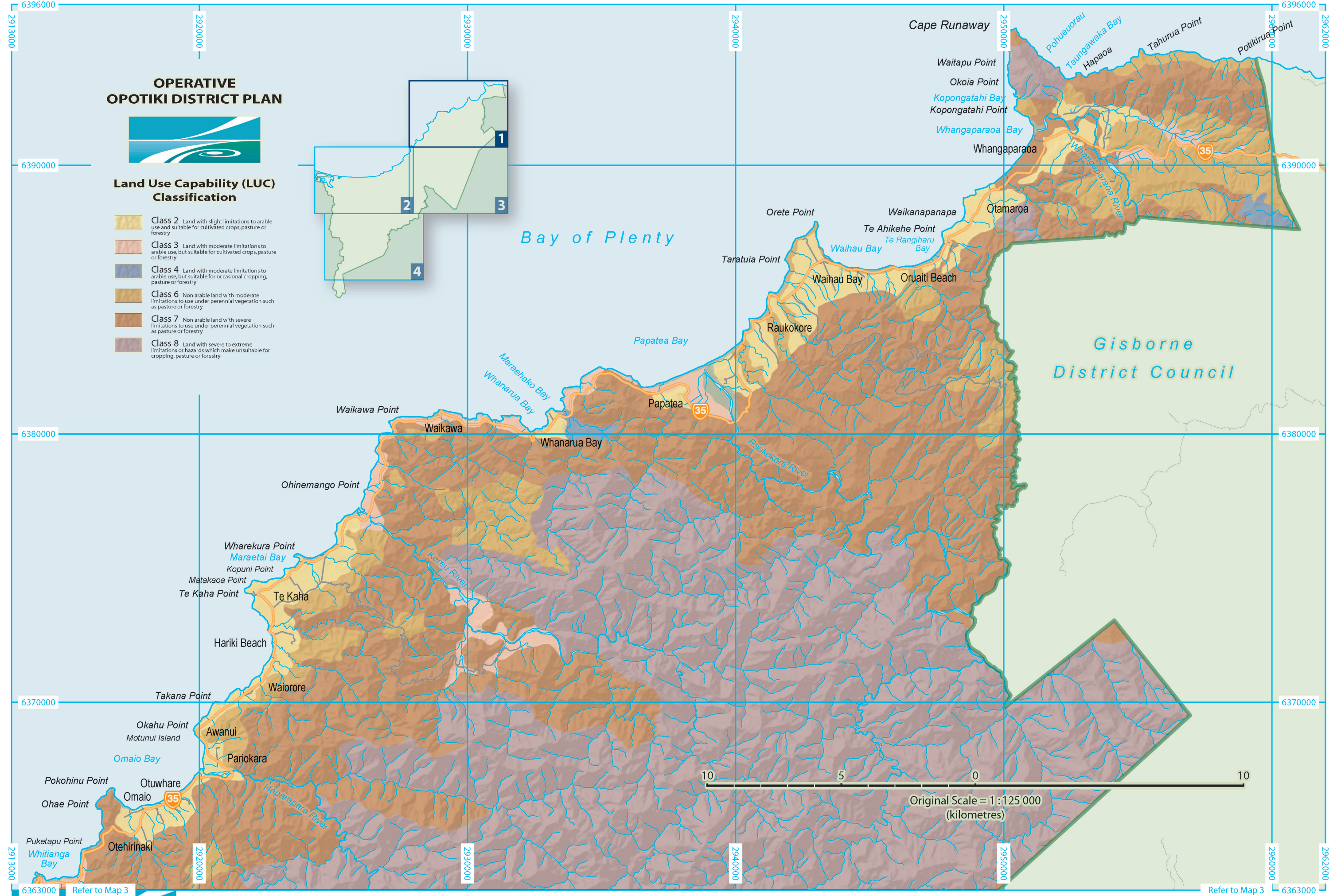
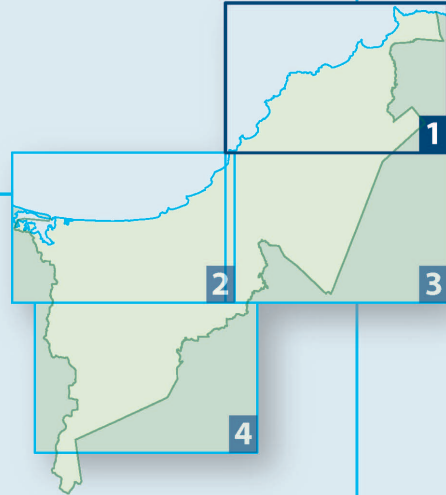


**OPERATIVE  
OPOTIKI DISTRICT PLAN**



**Land Use Capability (LUC)  
Classification**

-  **Class 2** Land with slight limitations to arable use and suitable for cultivated crops, pasture or forestry
-  **Class 3** Land with moderate limitations to arable use, but suitable for cultivated crops, pasture or forestry
-  **Class 4** Land with moderate limitations to arable use, but suitable for occasional cropping, pasture or forestry
-  **Class 6** Non arable land with moderate limitations to use under perennial vegetation such as pasture or forestry
-  **Class 7** Non arable land with severe limitations to use under perennial vegetation such as pasture or forestry
-  **Class 8** Land with severe to extreme limitations or hazards which make unsuitable for cropping, pasture or forestry



Original Scale = 1 : 125 000  
(kilometres)



Refer to Map 3

Refer to Map 3