

FACT SHEET

2022 election

8 OCTOBER 2022



What does Council do?

The District Council meets regularly to make many decisions that impact the day-to-day lives of people in the Ōpōtiki area. The Council governs a wide range of local services including roads, water systems, rubbish collection, libraries, parks, community centres, dog registration, community and economic development and district planning.

Background

Local government triennial elections are being held by postal vote on Saturday 8 October 2022 and will be undertaken by Election Services, under contract to the Ōpōtiki District Council.

The first past the post (FPP) electoral system will be used for the Ōpōtiki District Council elections and the Bay of Plenty Regional Council elections.

2022 Key Dates

Nominations open	Friday 15 July
Nominations close	Noon, Friday 12 August
Delivery of voting packs	from Friday 16 September
Close of voting	Noon, Saturday 8 October
Official results announced	Thursday 13 October

Who is being elected?

Elections will be required for the following positions:

- Mayor (elected 'at large')
- Councillors (6)
 - Coast Ward (1)
 - Ōpōtiki Ward (3)
 - Waioeka-Waiōtahe-Otara Ward (2)
- Community Board Members (4)
 - Coast Community Board (4)
- Bay of Plenty Regional Council Members (either 2 members from the Eastern Bay of Plenty General Constituency or 1 member from the Kōhi Māori Constituency).

There will be no district health board elections in 2022.

In addition to the above, a non-binding poll will be undertaken on the establishment of Māori wards.

How can I be nominated?

Nominations for these positions will open on **Friday 15 July 2022** and close at noon on **Friday 12 August 2022**.

Nomination papers will be available during this period:

- from the Ōpōtiki District Council office, 108 St John Street, Ōpōtiki;
- by accessing www.odc.govt.nz;
- by telephoning the electoral office on 0800 922 822.

To be eligible to stand for election, a candidate **must** be:

- a New Zealand citizen (by birth or naturalisation ceremony); **and**
- enrolled as a Parliamentary elector (anywhere in New Zealand); **and**
- nominated by two electors whose names appear on the electoral roll within the respective area that a candidate is standing for.

A detailed candidate information handbook will be available from April 2022.

Who can vote?

Those eligible to vote are all resident electors and non-resident ratepayer electors whose names appear on the electoral roll when it closes on Friday 12 August 2022. The Preliminary Electoral Roll will be available for public inspection from **Friday 15 July 2022** to **Friday 12 August 2022** at:

- Ōpōtiki District Council offices, 108 St John Steet, Ōpōtiki;
- Ōpōtiki Library, 100 Church Street, Ōpōtiki;
- Whakatōhea Māori Trust Board, 122 St John Steet, Ōpōtiki;
- RSA Te Kaha, 6749 State Highway 35
- Ngaitai Iwi Authority, State Highway 35, Torere.

Resident Roll: All parliamentary electors, including those on the Māori Electoral Roll, are automatically enrolled on the Resident Roll, at the address where they live.

Any alterations to the Resident Roll (e.g. change of address details, including new postal addresses) should be made by:

- completing the appropriate form at any postal agency;
- phoning 0800 ENROLNOW (0800 36 76 56)
- accessing the Electoral Commission website on www.vote.nz

Ratepayer Roll: If a person is on the parliamentary roll in one area and pays rates on a property in another area, this person may be eligible to be enrolled on the non-resident ratepayer roll. A firm, company, corporation or society paying rates on a property may nominate one of its members or officers as a ratepayer elector (provided the nominated person resides outside the area). Ratepayer Roll enrolment forms are available at www.odc.govt.nz, or by phoning 0800 922 822.

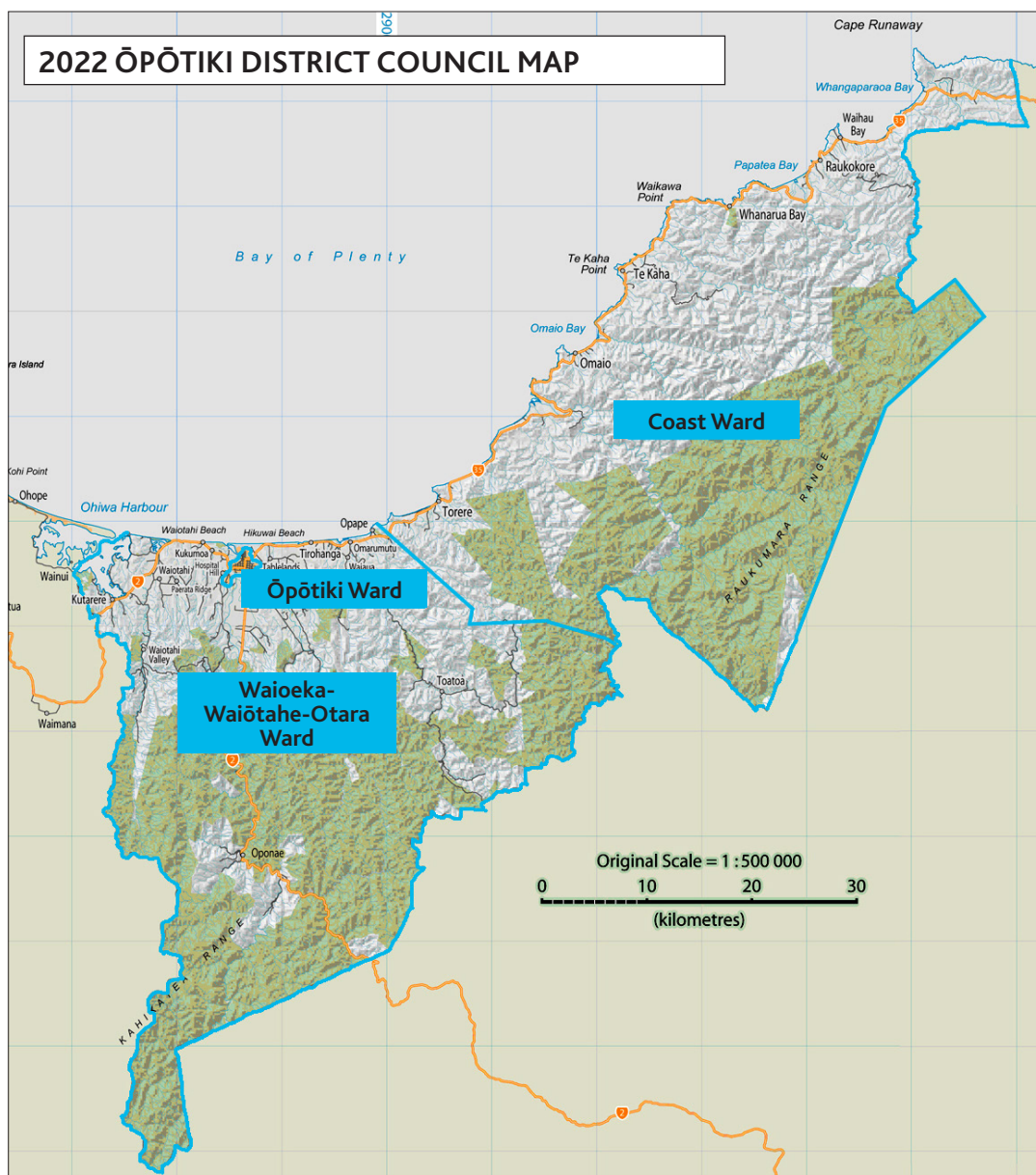
How to vote?

Voting packs will be sent out in the mail to all those who have enrolled from **Friday 16 September 2022**.

The voting period is three weeks (**Friday 16 September 2022 to noon Saturday 8 October 2022**). Electors may post their completed voting documents back to the electoral officer using the orange pre-paid envelope sent with their voting document.

A polling place for the issuing of special voting documents and for the receiving of completed voting documents will be available from Friday 16 September 2022 to noon Saturday 8 October 2022 at the Ōpōtiki District Council offices, 108 St John Street, Ōpōtiki; To be counted, all completed voting documents must be in the hands of the electoral officer or an electoral official by **noon Saturday 8 October 2022**.

Progress results will be known early afternoon on election day, and preliminary results will be known on Sunday morning, 9 October 2022. Final results will be known on Thursday 13 October 2022, and all results will be accessible on Council's website: www.odc.govt.nz



Contact us



Dale Ofoske, Electoral Officer
Independent Election Services Ltd
Level 2, 198 Federal Street, Auckland
PO Box 5135, Victoria Street West, Auckland 1142
Email: info@electionservices.co.nz
Phone: 0800 922 822

Peter Bridgwater, Council Liaison Person
Ōpōtiki District Council
108 St John Street, Ōpōtiki
PO Box 44, Ōpōtiki 3162
Email: peterb@odc.govt.nz
Phone: 07 315 3030