



Opotiki Harbour






**The Opotiki Harbour
Transformation Project**
The key step to a brighter future

38°00'00"S 177°30'00"E - Opotiki

The Vision

Economic and social independence:

-  Horticulture especially Kiwifruit at Te Kaha
-  The Motu Trails Cycle Way
-  Opotiki's Aquaculture Project

Aquaculture/Harbour Projects

Two Organisations
Two Projects
One plan

Why Aquaculture

- Potential to transform the district
- Marine environment provides opportunity
- Environmental Sustainability is proven
- Demand is there
- Brings employment in support industries
- Water space is locally controlled

Council's Role

- Advocate for the Aquaculture Project
- Planning / regulatory
- Provider of infrastructure/services
 - Water
 - Sewerage
 - Advocate for Electricity
 - Twin Harbour groynes

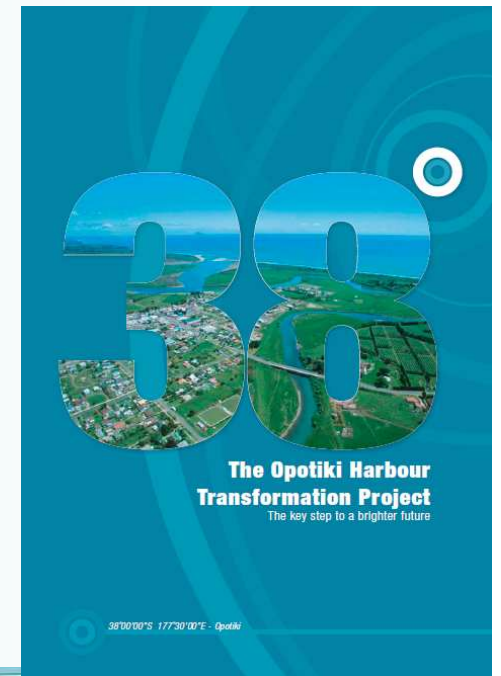


Opotiki District Council Harbour Entrance

- 200 submissions support/no appeal
- 89% of community say “very important”
- Fully Consented
- Updated business case(s) in prep
- Part funding needed
 - District \$10M
 - Region \$15M
 - Central \$15M?
- “Chicken and egg” relationship

Last Year

- Scoping
 - Planning work
 - Consent Implementation
 - River modelling update
- Joint Project Chart (Harbour/Aq)
- 38 Degrees
- Advocacy



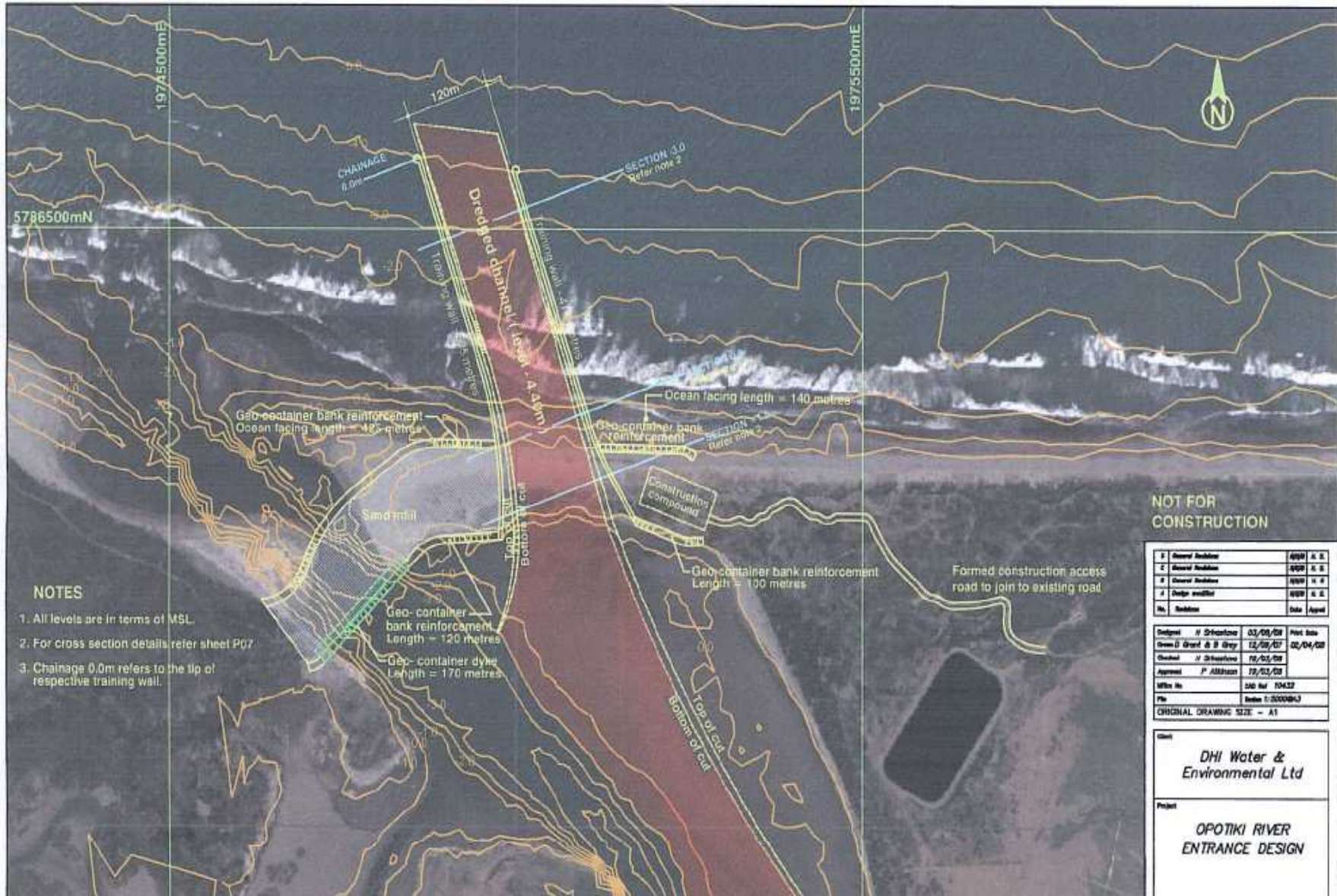
This year

- Joint “interim” Business Case
- Long Term Council Plan
 - Infrastructure
 - Landuse planning
- BOP Regional Council LTP
 - Infrastructure
 - Planning
- Advocacy





The Opotiki Harbour development



Looking ahead

- Both business cases rely on trial results
- Funding sources – Local/Regional/National
- Construction planning/Implementation
- Land/Sea-use planning (district/coastal plans)
- Other Infrastructure planning/funding
- Other Social Planning

Issues

- At home
 - Resourcing of both WMTB and ODC
 - Maintaining momentum
 - Managing myths
 - Ability of community to fund
- Centrally
 - Outlook for Aq industry
 - Need for part central funding
 - Lack of clear lead Ministry for infrastructure

It doesn't just happen

IT NEEDS VISION

IT TAKES LEADERSHIP

IT REQUIRES COLLABORATION

IT MUST BE 'JOINED UP'

- When an Iwi, Local Government, NGO's, Scientists, and private enterprise stand together it is an incredibly powerful collaboration
- We need Central Government to stand alongside.



Thank You

