

Attachment 3- Scheme Plans and LT Plans for other developments discussed in s42A report

Figures A and B – Scheme plan for subdivision 2017-43 which was granted through consent order.



Figure C – Land Transfer Plan for Ohiwa Cove Rise subdivision- RC2009-35

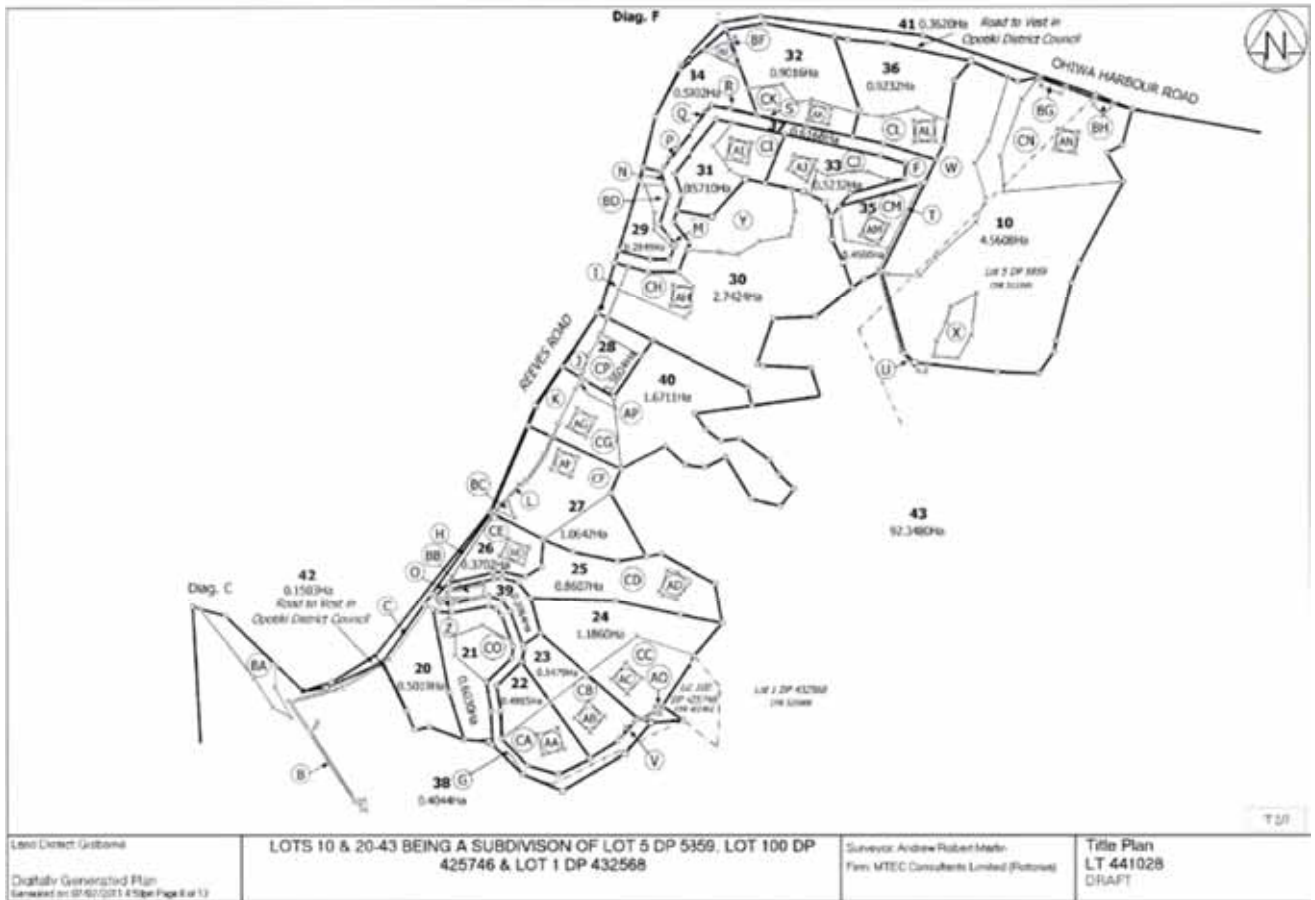


Figure D – Scheme plan for subdivision 2007-35 / 2017-20 which was granted through consent order. This are accessed from the new public road, Ron Smith Drive. Stage 2 lots (lots 4-7) are yet to obtain title.



