



Visual Simulation for

G & S Stillwell

98C Ohiwa Harbour Road,
Opotiki, Bay of Plenty

Drawing Number:	Drawing Description:	Drawing Issue Date:	Drawing Number:	Drawing Description:	Drawing Issue Date:
J001233/01	- Methodology	9/08/22	J001233/11	- Viewpoint 06 - 5 Years	9/08/22
J001233/02	- Viewpoint Locations	9/08/22	J001233/12	- Viewpoint 06 - Proposed Buildings Close Up	9/08/22
J001233/03	- Building Locations	9/08/22	J001233/13	- Viewpoint 06 - 5 Years Close Up	9/08/22
J001233/04	- Viewpoint 04 - Existing	9/08/22	J001233/14	- Viewpoint 10 - Existing	9/08/22
J001233/05	- Viewpoint 04 - Proposed Buildings	9/08/22	J001233/15	- Viewpoint 10 - Proposed Buildings	9/08/22
J001233/06	- Viewpoint 04 - 5 Years	9/08/22	J001233/16	- Viewpoint 10 - 5 Years	9/08/22
J001233/07	- Viewpoint 04 - Proposed Buildings Close Up	9/08/22	J001233/17	- Viewpoint 10 - Proposed Buildings Close Up	9/08/22
J001233/08	- Viewpoint 04 - 5 Years Close Up	9/08/22	J001233/18	- Viewpoint 10 - 5 Years Close Up	9/08/22
J001233/09	- Viewpoint 06 - Existing	9/08/22			
J001233/10	- Viewpoint 06 - Proposed Buildings	9/08/22			



Methodology for Photo Simulations

The photomontage images have been produced by Greenwood Associates Landscape Architects and are based on the following factors:

- The camera field of view with a 55mm lens for Viewpoints 04/06/10
- The camera position in a 3D space located at the following positions (X,Y WKID 2193) for the respective viewpoints:
 - Viewpoint 4: 1967234.68922, 5785539.6539
 - Viewpoint 6: 1963815.76759, 5785911.30597
 - Viewpoint 10: 1965867.72670, 5787147.10156

All coordinates were obtained on site and inputed as datum reference points within Archicad to determine each camera location. (Viewpoints 4 & 6 match those in the corresponding LVA document)

The camera used to obtain the images utilised for these simulations was a Nikon D5100 with a fixed lens focal length of 55mm and a Sony M7 MK 2 with a fixed focal length of 55mm.

The images were then input into 3D modelling software (ArchiCAD) to determine the correct camera settings for the model renders.

The camera positions are set as per the obtained coordinates listed above (refer drawing J001233/2 'viewpoint locations' for a viewpoint location map). These positions and approximate camera angles were then translated into a 3D scene in the modelling software. The chosen positions highlight the key areas that will have visual access to the proposed development.

The scene was cross-referenced by using ArchiCad and contours to export an accurate scaled 3D model. To place the model in context, a map of site is placed within the 3D software to allow an accurate positioning of the terrain and building models.

Individual renders of the 3D model were then created from all relevant camera positions and angles, The camera was positioned 1.80m above sea level for Viewpoint 4, 2.80m above sea level for Viewpoint 6 and 101.80m above sea level for Viewpoint 10, this includes the eye level height of the photographer. The 3D renders were then overlaid onto the original images using Photoshop with any part of the render not required then deleted.

Note: All visualisations are to be viewed at 550mm from the eye when printed on A3 standard paper.

All coordinates given in this document are WKID 2193.

All buildings modelled are 200sqm, lots 10-12 are single storey at 5m high and lots 1-7 are two-storeys at 7m high. They are positioned near the northwestern corner of each building platform.

All specimen trees shown are 1-1.5m tall at time of planting. A growth rate of up to 1m each year is expected, reaching up to 7m high over a 5 year period as indicated in the landscape plans.

Building platforms within the neighbouring development has been shown as transparent silhouettes at 5m high within each image where visible.



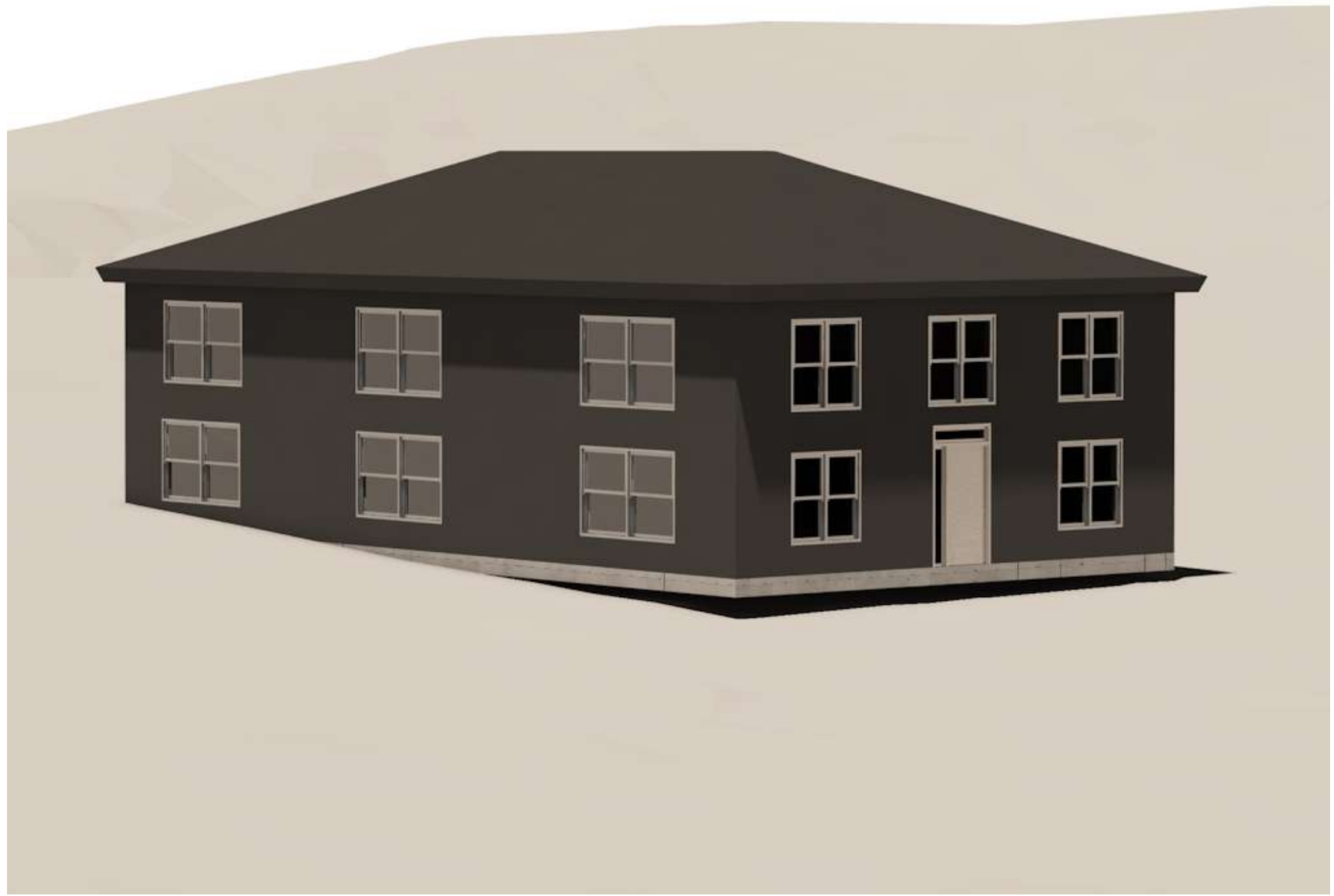
Viewpoint 10
X: 1965867.72670
Y: 5787147.10156
Elevation: +101.80m

Viewpoint 6
X: 1963815.76759
Y: 5785911.30597
Elevation: +1.80m

Viewpoint 4
X: 1967234.68922
Y: 5785539.6539
Elevation: +2.80m



BUILDING MODEL: 1 STOREY HOUSE – LOTS 10/11/12



BUILDING MODEL: 2 STOREY HOUSE – LOTS 1/2/3/4/6/7

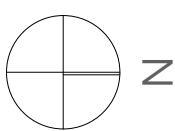




Image Specifications

- Camera: Nikon D5100
- Sensor: CMOS 23.6x15.6mm
- Lens: AF-S NIKKON 18-55mm 1:3.5-5.6G Locked at 55mm Length
- Printed Image Size: 400x267mm @ A3
- Simulation Technique: Photomontage produced in Photoshop using scale model rendered in ArchiCad

- Image Viewing Distance 550mm from eye at A3
- Distance to site: Approx. 800m
- Co-ordinates WKID 2193: X:1967234.68922 Y:5785539.6539
- Elevation: +2.80m
- Image date: 17 February 2022

Client
G & S Stillwell

Project
98C Ohiwa Harbour Road, Opotiki, Bay of Plenty

Drawing
J001233/04 Viewpoint 04 - Existing

Issue Date
9/08/22

Drawn
GR
Checked
CC





Image Specifications - Camera: Nikon D5100
- Sensor: CMOS 23.6x15.6mm
- Lens: AF-S NIKKON 18-55mm 1:3.5-5.6G Locked at 55mm Length
- Printed Image Size: 400x267mm @ A3
- Simulation Technique: Photomontage produced in Photoshop using scale model rendered in ArchiCad

- Image Viewing Distance 550mm from eye at A3
- Distance to site: Approx. 800m
- Co-ordinates WKID 2193: X:1967234.68922 Y:5785539.6539
- Elevation: +2.80m
- Image date: 17 February 2022

- Neighbouring development has been shown as transparent silhouettes at 5m high



Image Specifications

- Camera: Nikon D5100
- Sensor: CMOS 23.6x15.6mm
- Lens: AF-S NIKKON 18-55mm 1:3.5-5.6G Locked at 55mm Length
- Printed Image Size: 400x267mm @ A3
- Simulation Technique: Photomontage produced in Photoshop using scale model rendered in ArchiCad

- Image Viewing Distance 550mm from eye at A3
- Distance to site: Approx. 800m
- Co-ordinates WKID 2193: X:1967234.68922 Y:5785539.6539
- Elevation: +2.80m
- Image date: 17 February 2022

- Neighbouring development has been shown as transparent silhouettes at 5m high

Client
G & S Stillwell

Project
98C Ohiwa Harbour Road, Opotiki, Bay of Plenty

Drawing
J001233/06 Viewpoint 04 – 5 Years

Issue Date
9/08/22

Drawn
GR
Checked
CC





Image Specifications

- Camera: Nikon D5100
- Sensor: CMOS 23.6x15.6mm
- Lens: AF-S NIKKON 18-55mm 1:3.5-5.6G Locked at 55mm Length
- Printed Image Size: 400x267mm @ A3
- Simulation Technique: Photomontage produced in Photoshop using scale model rendered in ArchiCad

- Image Viewing Distance 550mm from eye at A3
- Distance to site: Approx. 800m
- Co-ordinates WKID 2193: X:1967234.68922 Y:5785539.6539
- Elevation: +2.80m
- Image date: 17 February 2022

- Photo has been zoomed x2 to adequately show building models



Image Specifications

- Camera: Nikon D5100
- Sensor: CMOS 23.6x15.6mm
- Lens: AF-S NIKKON 18-55mm 1:3.5-5.6G Locked at 55mm Length
- Printed Image Size: 400x267mm @ A3
- Simulation Technique: Photomontage produced in Photoshop using scale model rendered in ArchiCad

- Image Viewing Distance 550mm from eye at A3
- Distance to site: Approx. 800m
- Co-ordinates WKID 2193: X:1967234.68922 Y:5785539.6539
- Elevation: +2.80m
- Image date: 17 February 2022

- Photo has been zoomed x2 to adequately show building models



Image Specifications

- Camera: Nikon D5100

- Sensor: CMOS 23.6x15.6mm

- Lens: AF-S NIKKON 18-55mm 1:3.5-5.6G Locked at 55mm Length

- Printed Image Size: 400x267mm @ A3

- Simulation Technique: Photomontage produced in Photoshop using scale model rendered in ArchiCad

- Image Viewing Distance 550mm from eye at A3

- Distance to site: Approx. 2430m

- Co-ordinates WKID 2193: X:1963815.76759 Y:5785911.30597

- Elevation: +1.80m

- Image date: 17 February 2022

Client

G & S Stillwell

Project

98C Ohiwa Harbour Road, Opotiki, Bay of Plenty

Drawing

J001233/09 Viewpoint 06 – Existing

Issue Date

9/08/22

Drawn

GR

Checked

CC





Image Specifications

- Camera: Nikon D5100
- Sensor: CMOS 23.6x15.6mm
- Lens: AF-S NIKKON 18-55mm 1:3.5-5.6G Locked at 55mm Length
- Printed Image Size: 400x267mm @ A3
- Simulation Technique: Photomontage produced in Photoshop using scale model rendered in ArchiCad

- Image Viewing Distance 550mm from eye at A3
- Distance to site: Approx. 2430m
- Co-ordinates WKID 2193: X:1963815.76759 Y:5785911.30597
- Elevation: +1.80m
- Image date: 17 February 2022

- Neighbouring development has been shown as transparent silhouettes at 5m high

Client
G & S Stillwell

Project
98C Ohiwa Harbour Road, Opotiki, Bay of Plenty

Drawing
J001233/10 Viewpoint 06 – Proposed Buildings

Issue Date
9/08/22

Drawn
GR
Checked
CC





Image Specifications

- Camera: Nikon D5100

- Sensor: CMOS 23.6x15.6mm

- Lens: AF-S NIKKON 18-55mm 1:3.5-5.6G Locked at 55mm Length

- Printed Image Size: 400x267mm @ A3

- Simulation Technique: Photomontage produced in Photoshop using scale model rendered in ArchiCad

- Image Viewing Distance 550mm from eye at A3

- Distance to site: Approx. 2430m

- Co-ordinates WKID 2193: X:1963815.76759 Y:5785911.30597

- Elevation: +1.80m

- Image date: 17 February 2022

- Neighbouring development has been shown as transparent silhouettes at 5m high

Client

G & S Stillwell

Project

98C Ohiwa Harbour Road, Opotiki, Bay of Plenty

Drawing

J001233/11 Viewpoint 06 – 5 Years

Issue Date

9/08/22

Drawn

GR

Checked

CC





Image Specifications

- Camera: Nikon D5100
- Sensor: CMOS 23.6x15.6mm
- Lens: AF-S NIKKON 18-55mm 1:3.5-5.6G Locked at 55mm Length
- Printed Image Size: 400x267mm @ A3
- Simulation Technique: Photomontage produced in Photoshop using scale model rendered in ArchiCad

- Image Viewing Distance 550mm from eye at A3
- Distance to site: Approx. 2430m
- Co-ordinates WKID 2193: X:1963815.76759 Y:5785911.30597
- Elevation: +1.80m
- Image date: 17 February 2022

- Neighbouring development has been shown as transparent silhouettes at 5m high
- Photo has been zoomed x2 to adequately show building models



Image Specifications

- Camera: Nikon D5100
- Sensor: CMOS 23.6x15.6mm
- Lens: AF-S NIKKON 18-55mm 1:3.5-5.6G Locked at 55mm Length
- Printed Image Size: 400x267mm @ A3
- Simulation Technique: Photomontage produced in Photoshop using scale model rendered in ArchiCad

- Image Viewing Distance 550mm from eye at A3
- Distance to site: Approx. 2430m
- Co-ordinates WKID 2193: X:1963815.76759 Y:5785911.30597
- Elevation: +1.80m
- Image date: 17 February 2022

- Neighbouring development has been shown as transparent silhouettes at 5m high
- Photo has been zoomed x2 to adequately show building models



Image Specifications

- Camera: Sony A7 MK 2
- Lens: Locked at 55mm Length
- Printed Image Size: 400x267mm @ A3
- Simulation Technique: Photomontage produced in Photoshop using scale model rendered in ArchiCad

- Image Viewing Distance 550mm from eye at A3
- Distance to site: Approx. 1400m
- Co-ordinates WKID 2193: X:1965867.72670 Y:5787147.10156
- Elevation: +101.80m
- Image date: 4 Aug 2022



Image Specifications

- Camera: Sony A7 MK 2
- Lens: Locked at 55mm Length
- Printed Image Size: 400x267mm @ A3
- Simulation Technique: Photomontage produced in Photoshop using scale model rendered in ArchiCad

- Image Viewing Distance 550mm from eye at A3

- Distance to site: Approx. 1400m

- Co-ordinates WKID 2193: X:1965867.72670 Y:5787147.10156

- Elevation: +101.80m

- Image date: 4 Aug 2022

Client
G & S Stillwell

Project
98C Ohiwa Harbour Road, Opotiki, Bay of Plenty

Drawing
J001233/15 Viewpoint 10 – Proposed Buildings

Issue Date
9/08/22

Drawn
GR
Checked
CC





Image Specifications
- Camera: Sony A7 MK 2
- Lens: Locked at 55mm Length
- Printed Image Size: 400x267mm @ A3
- Simulation Technique: Photomontage produced in Photoshop using scale model rendered in ArchiCad

- Image Viewing Distance 550mm from eye at A3
- Distance to site: Approx. 1400m
- Co-ordinates WKID 2193: X:1965867.72670 Y:5787147.10156
- Elevation: +101.80m
- Image date: 4 Aug 2022

Client
G & S Stillwell

Project
98C Ohiwa Harbour Road, Opotiki, Bay of Plenty

Drawing
J001233/16 Viewpoint 10 – 5 Years

Issue Date
9/08/22

Drawn
GR
Checked
CC





Image Specifications

- Camera: Sony A7 MK 2
- Lens: Locked at 55mm Length
- Printed Image Size: 400x267mm @ A3
- Simulation Technique: Photomontage produced in Photoshop using scale model rendered in ArchiCad

- Image Viewing Distance 550mm from eye at A3
- Distance to site: Approx. 1400m
- Co-ordinates WKID 2193: X:1965867.72670 Y:5787147.10156
- Elevation: +101.80m
- Image date: 4 Aug 2022

- Photo has been zoomed x2 to adequately show building models



Image Specifications

- Camera: Sony A7 MK 2
- Lens: Locked at 55mm Length
- Printed Image Size: 400x267mm @ A3
- Simulation Technique: Photomontage produced in Photoshop using scale model rendered in ArchiCad

- Image Viewing Distance 550mm from eye at A3
- Distance to site: Approx. 1400m
- Co-ordinates WKID 2193: X:1965867.72670 Y:5787147.10156
- Elevation: +101.80m
- Image date: 4 Aug 2022

- Photo has been zoomed x2 to adequately show building models