



NOTICE OF AN EASTERN BAY OF PLENTY JOINT COMMITTEE MEETING

**Ōpōtiki District Council Chambers,
108 St John Street, Opotiki
Wednesday 9th March 2016
commencing at 12.30 pm**

Lunch will be provided at 12 midday

Please note change of time to start at 12.30 pm

Eastern Bay of Plenty Joint Committee – Terms of Reference

1 Purpose

- 1 Eastern Bay of Plenty Joint Committee (“EBOPJC”) is a collaboration between Bay of Plenty Regional Council (“BOPRC”), Kawerau District Council (“KDC”), Ōpōtiki District Council (“ODC”) and Whakatāne District Council (“WDC”) for responding to and managing a range of Eastern Bay of Plenty issues.
- 2 The purpose of EBOPJC is to form, explore and make recommendations for strategic collaborative initiatives between the partner councils.
- 3 EBOPJC will be guided by this Terms of Reference and the EBOPJC Memorandum of Understanding (MOU) as agreed by the partner councils.
- 4 For the purposes of this Term of Reference, “Eastern Bay of Plenty” is defined as the Territorial Authority areas of KDC, ODC and WDC.

2 Membership

Members of the EBOPJC will be:

- Two elected members as appointed by, and representing, BOPRC.
- Two elected members as appointed by, and representing, KDC.
- Two elected members as appointed by, and representing, ODC.
- Two elected members as appointed by, and representing, WDC.

The members of EBOPJC will act in accordance with the Memorandum of Understanding.

3 Delegations

EBOPJC is a joint committee of councils that will make recommendations to constituent councils.

EBOPJC can make recommendations on the following:

- 1 Opportunities for joint collaboration on initiatives that support the needs of Eastern Bay of Plenty communities;
- 2 Coordination of and encouragement of beneficial interrelationships and connections between activities/services across the Eastern Bay of Plenty;
- 3 Mitigation of adverse cross boundary effects of decisions, planning and activities on other regions, cities and districts;
- 4 Resolution of differences and conflicts, and ensuring no surprises, where activities in one district may affect another;
- 5 Sharing of information, expertise, databases and research where there is a mutual interest and benefit;
- 6 Encouraging integration and consistency of planning across the Eastern Bay of Plenty;

- 7 Developing agreed positions as appropriate on matters of importance and major government initiatives and, through each respective council, communicate these positions to central government and relevant national organisations;
- 8 Investigating opportunities for achieving cost efficiencies by sharing responsibilities and services.
- 9 Where appropriate and applicable, recommendations must be supported by cost-benefit analyses.
- 10 Each Council participating in a joint initiative will fund its own proportion of that joint initiative as determined by EBOPJC.

4 Meetings

- 1 EBOPJC meetings will be held in accordance with the requirements of Schedule 7 of the Local Government Act 2002 and the requirements of the Local Government Official Information and Meetings Act 1987.
- 2 A meeting is duly constituted if a quorum is present, whether or not all of the members are voting or entitled to vote.
- 3 Business may not be transacted at any meeting unless at least a quorum of members is present during the whole of the time at which the business is transacted.
- 4 The quorum at a meeting of EBOPJC is half of the members if the number of members (including vacancies) is even, or a majority of members if the number of members (including vacancies) is odd.
- 5 The members of EBOPJC will engage with their respective councils on strategic issues under discussion and all councils will maintain their own operational inter-council relationships as normal.
- 6 The Chief Executive, or the Chief Executive's representative, of each partner council shall attend meetings and will act as advisors to the EBOPJC.
- 7 Meetings will be coordinated and recorded by staff from the partner council as scheduled by EBOPJC.
- 8 Meetings may be attended by further staff support as considered appropriate by their Chief Executive.
- 9 External speakers and participants, including mayors from territorial authorities who are not parties to EBOPJC, with specific interests in the items under discussion, may be invited to attend meetings.
- 10 Meetings will be held at times and in places set out in an agreed schedule.
- 11 Any formal public communications from meetings will be approved by EBOPJC prior to release.
- 12 The Chairpersons of EBOPJC shall be determined, on an annual basis, by the process as set out at clause 25 of Schedule 7 of the Local Government Act 2002.
- 13 Each Chairperson will have a term of one year.

- 14 A member cannot be appointed as the Chairperson, if either of the previous two Chairpersons were representatives of that member's constituent council.
- 15 Decisions on recommendations of the Committee shall be made in accordance with Clause 24 of Schedule 7 of the Local Government Act 2002 – by vote of majority of members that are present and voting.
- 16 The Chairperson will have a deliberative vote.
- 17 In the case of equality of votes, the Chairperson of EBOPJC does not have a casting vote and the status quo is preserved.
- 18 A Deputy Chair shall be determined by the process as set out at clause 25 of Schedule 7 of the Local Government Act 2002.
- 19 The Deputy Chair shall act in the absence of the Chairperson.
- 20 If a Chairperson resigns from their position before the end of their term, the Deputy Chair shall take their place and will serve out the remainder of the term as Chairperson.
- 21 If a Chairperson resigns and the Deputy Chair becomes Chairperson, clause 25 does not apply.
- 22 Nothing in this Terms of Reference precludes EBOPJC from appointing an independent chairperson.
- 23 If an independent chairperson is appointed they will also be appointed as a member and will continue to be a member until the end of their term.

5 Establishment Provisions

- 1 For the initial period of establishment (until the first meeting of the next triennium – late 2013) an interim chairperson shall be appointed.
- 2 The interim chairperson's term shall end at the next meeting of EBOPJC after elected members have been sworn in (October 2013).
- 3 The interim chairperson shall be determined by EBOPJC at its first meeting in accordance with clause 25 of Schedule 7 of the Local Government Act 2002.
- 4 If the interim chairperson is appointed, clause 25 of this Terms of Reference does not apply.

Eastern Bay of Plenty Joint Committee Membership

Chairperson:	Councillor L Riesterer (Ōpōtiki District Council)
Deputy Chairperson:	to be appointed
Appointees:	Mayor A Bonne (Whakatane District Council), Mayor M Campbell (Kawerau District Council), Mayor J Forbes (Opotiki District Council), Deputy Mayor A Holmes, Councillor Norm Brunning (Kawerau District Council), Councillor S Jarrett (Whakatane District Council), Chairman D Leeder (Bay of Plenty Regional Council)
Secretary:	D Ashford-Hill

AGENDA


Apologies

Declaration of any interests in relation to opening meeting agenda items

Order Paper

	Page
Confirmation of Minutes	
1. Minutes – Eastern Bay of Plenty Joint Committee minutes – 8 December 2015	9
Reports	
2. Appointment of Deputy Chairperson	17
3. Toi Moana Economic Action Plan	19
4. Pathworks to Work	29
5. Ōpōtiki Harbour Transformation Project Update	33
6. Draft Eastern Bay – Beyond Today - Attachment separate - Eastern Bay – Beyond today	39
7. Update on the changes to the Resource Management Act	43
8. 2016 Field Trips	47
9. 2016 agenda reports	49

Minutes EBOP Joint Committee 08 December 2015

	Details of Meeting:	Eastern Bay Of Plenty Joint Committee Meeting Held in Council Meeting Room One, Bay of Plenty Regional Council, 5 Quay Street, Whakatane on Tuesday, 8 December 2015 commencing at 9.35am
	Present:	Councillor N Bruning - Bay of Plenty Regional Council (Chairman), Mayor A Bonne (Whakatāne District Council), Councillor A Holmes (Kawerau District Council), Mayor J Forbes and Councillor L Riesterer (Ōpōtiki District Council)
	In Attendance:	Councillors D Love (Bay of Plenty Regional Council), J Pullar (Whakatāne District Council). From Toi EDA – J Galbraith (Executive Chairman), J Gardyne (General Manager Strategy and Economic Development), R Tait (Trustee). From Kawerau District Council - R George (Chief Executive), C Jensen, Manager Regulatory and Planning). From Ōpōtiki District Council – A Lawrie (Chief Executive), B Dempsey (Planning and Regulatory Manager), From Whakatāne District Council - David Bewley (General Manager Planning and Regulatory Services), M Grenfell (Chief Executive), I Krawczyk (Project Manager). From Bay of Plenty Regional Council – R Feist (Senior Planner), E Grogan (General Manager Regulatory Services), A Miller (Project Implementation Officer), I Morton (Strategy and Science Manager), K Tarboton (Eastern Bay Area Manager), S Cubbon (Committee Advisor)
	Apologies:	Mayor M Campbell (Kawerau District Council), Councillor S Jarrett (Whakatāne District Council), Chairman D Leeder (Bay of Plenty Regional Council)

1 General Business

Mayor Bonne requested the matter of Alternates be discussed as an item of General Business at the end of meeting

Resolved

That pursuant to section 46A of the Local Government Official Information and Meetings Act 1987 the following item be considered at this meeting.

Alternate Membership

**Bonne/Bruning
CARRIED**

2 **Declaration of conflicts of interest**

None declared.

3 **Change to order of business**

The Chairman advised that Item 5.3 'Eastern Bay of Plenty Business Adviser', page 19 of the agenda would not be received at this meeting. The presenter, Gerard Casey, Chief Executive Officer of the Eastern Bay of Plenty Chamber of Commerce, was unable to attend.

4 **Eastern Bay of Plenty Joint Committee minutes - 16 September 2015**

Resolved

That the Eastern Bay of Plenty Joint Committee under its delegated authority:

- 1 Receives the report, Eastern Bay of Plenty Joint Committee minutes - 16 September 2015**

**Bonne/Holmes
CARRIED**

5 **Eastern Bay – Beyond Today Update**

Senior Planner, Ruth Feist introduced two documents – the Draft Eastern Bay – Beyond Today and the draft Implementation Plan. Both were almost complete and members were asked for their input in regard to some of the highlighted areas, and to comment on what had been put together so far. Ms Feist advised there was to be a workshop in early February 2016 for members of the Eastern Bay Spatial Plan Subcommittee and other interested members to discuss the documents before engaging the public. The Eastern Bay – Beyond Today document and maps would need to be finalised and presented for adoption by the partner Councils before the end of the financial year.

Members made suggestions as to further detail that may be included, and appreciated the document showed a good job being done locally but this did not get it onto a national stage. Ms Feist responded that the February workshop should identify what the gaps were and thus lead to closing those gaps and coming up with a long term initiative. There was acknowledgement of the positives, such as improved roading networks, transport, the rail network and Eastern Bay's close proximity to a major port and it was good for all the Councils to get together. The Document showed everyone the major attributes and opportunities of the Eastern Bay region.

Resolved

That the Eastern Bay of Plenty Joint Committee under its delegated authority:

- 1 Receives the report, Eastern Bay – Beyond Today Update**

- 2 **Notes the draft Eastern Bay – Beyond Today will be brought to the Committee for approval for public engagement at the meeting in March 2016.**

**Bonne/Riesterer
CARRIED**

6 **Economic Development in the Eastern Bay of Plenty**

The presentation from Toi-EDA Executive Chairman, John Galbraith provided information on discussions underway intended to improve collaboration on economic development in the Eastern Bay of Plenty. Toi- EDA were in favour of having one economic development agency in the Eastern Bay. He pointed out the desire of Government to work with well-connected regions. They were feeling their way through contact with the seven iwi in the area, and effective engagement had elicited excellent response. There had been constructive discussion with Grow the Whakatāne Advisory Board, but Toi-EDA would be unable to deliver its objectives without increased support from Whakatāne District Council.

As a trustee, Rob Tait noted the viability of Toi-EDA was of concern to himself and fellow trustees. There were very capable people on the Trust and there was opportunity being missed because the Eastern Bay were not acting as one. It was noted Whakatāne District Council was part of Toi-EDA, but had no funding allocated. Mayor Bonne suggested they go to a Council meeting and convince his Councillors.

Mr Tait discussed the review of the Toi-EDA Deed of Trust with reference to the appointment of Trustees. Members noted their commitment to Toi-EDA and a review of the Trust Deed.

Adjournment

The meeting adjourned for morning tea at 10.44am and reconvened at 11.10am.

Joint Committee members agreed to see if there could be some further discussion with various parties to make progress on the matter of funding for Toi-EDA.

Resolved

That the Eastern Bay of Plenty Joint Committee under its delegated authority:

- 1 **Receives the report, Economic Development in the Eastern Bay of Plenty**
- 2 **Notes that discussions on improving collaboration in the Eastern Bay of Plenty are continuing.**
- 3 **Requests a further update at the next Eastern Bay of Plenty Joint Committee meeting.**

**Bonne/Bruning
CARRIED**

7 **Matata Wastewater Project**

Refer PowerPoint presentation Obj. Ref. A2239080

Inka Krawczyk informed the Committee of the considerations undertaken to deliver a reticulated wastewater system to the community of Matatā. Strong support for the project had been expressed by the Matatā community. A number of options had been analysed and Ms Krawczyk explained these and the ranking system used to settle on an integrated wastewater treatment and disposal option of pumping to the Whakatāne ocean outfall.

Funding would be assisted by a Ministry of Health subsidy and Regional Council grant. Delays that included Environmental Court appeal meant Bay of Plenty Regional Council's previous grant of \$1.88 million had lapsed, and Whakatāne District Council would reapply. Joint Committee members noted the project relied heavily on external funding and the community would not be formally consulted until these contributions were secured.

Resolved

That the Eastern Bay of Plenty Joint Committee under its delegated authority:

- 1 Receives the report, Matata Wastewater Project.**

**Bruning/Forbes
CARRIED**

8 **Tourism Workshop feedback**

The report discussed outcomes of a workshop held on 28 October 2015 for Eastern Bay of Plenty tourism operators. The purpose of this workshop, attended by more than 60 attendees, was to consider opportunities for collaborative action that would enhance tourism delivery, coordination and promotions in the Eastern Bay. Of note was the enthusiasm from Māori tour operators. There was strong interest in the establishment of two Eastern Bay tourism cluster groups, one focusing on Māori tourism development.

Committee members requested a field trip to Taupō be arranged to learn what strategies had worked in that area.

Resolved

That the Eastern Bay of Plenty Joint Committee under its delegated authority:

- 1 Receives the report, Tourism Workshop feedback**
- 2 Notes that further Eastern Bay of Plenty Tourism Cluster Group meetings will be held in the New Year**
- 3 Requests a further update be provided after the next meeting of the Eastern Bay of Plenty Cluster Group meeting has been held.**

**Bonne/Forbes
CARRIED**

9 Treaty Landscape Update

Refer to PowerPoint presentation Obj.Ref. A2239336

Ken Tarboton spoke to this report giving an update on the status of Treaty claims and settlements in the Eastern Bay and what challenges and benefits settlements bring. There were currently six settlements:

- Ngāi Tūhoe
- Ngāti Whare
- Ngāti Manawa
- Ngāti Awa
- Ngāti Tūwharetoa (BOP)
- Central North Island Forest Land Collective

and Regional Council were engaged Treaty instruments that included working parties, statutory acknowledgements and co-governance arrangements. Members noted the challenges of Treaty legislation in regard to the RMA.

Resolved

That the Eastern Bay of Plenty Joint Committee under its delegated authority:

- 1 Receives the report, Treaty Landscape Update**

**Bruning/Riesterer
CARRIED**

10 Consents & Compliance

Refer PowerPoint presentation Obj.Ref. A2237951

Alex Miller presented the paper with a PowerPoint presentation that summarised and explained the annual Pollution Prevention and Compliance report, 1 July 2014 – 30 June 2015. He informed the Committee there were just over 1500 consents in the Eastern Bay area. 58 percent of the region's dairy effluent consents, 60 percent of the forestry consents and 63 percent of quarrying and shingle removal were in the Eastern Bay.

Members were interested in the information provided and noted some reports needed to be delivered at a TA level.

Resolved

That the Eastern Bay of Plenty Joint Committee under its delegated authority:

- 1 Receives the report, Consents & Compliance.**

**Forbes/Bruning
CARRIED**

11 **General Update**

Ken Tarboton's report set out the work programme covered in 2015 and asked for suggested topics for 2016. Members acknowledged the value of the very informative tour hosted by Kawerau District council on 1 December.

Ōpōtiki District Council Chief Executive, Aileen Lawrie provided additional information related to the recent visit to Ōpōtiki from Minister Joyce and the Memorandum of Understanding signed between Central Government, Regional and Ōpōtiki District Council for Ōpōtiki Harbour development. Ms Lawrie shared some of the exciting projects that would come out of this initiative.

Resolved

That the Eastern Bay of Plenty Joint Committee under its delegated authority:

- 1 Receives the report, General Update.**

**Forbes/Bruning
CARRIED**

12 **Election of Chair**

A new Chair must be elected annually in compliance with the Committee's Terms of Reference.

Resolved

That the Eastern Bay of Plenty Joint Committee under its delegated authority:

- 1 Receives the report, Election of Chair**

Bonne/Holmes

- 2 System B is chosen for the election of a new Chair.**

Riesterer/Bonne

- 3 Elects Councillor Lyn Riesterer as the new Joint Committee Chair.**

Bonne/Forbes

- 4 Acknowledges Councillor Norm Bruning for his contribution to the Committee during his term as Chairman.**

**Bonne/Riesterer
CARRIED**

The appointment of a Deputy Chairperson would be made at the next meeting.

13 **General Business**

Alternate members

Following discussion members agreed the matter of alternates might best be considered following Local Body Elections in 2016.

The meeting concluded at 1.10 pm.



To: **EASTERN BAY OF PLENTY JOINT COMMITTEE**

Meeting Date: **9 MARCH 2016**

Written by: **DALE ASHFORD-HILL, SECRETARY**

Subject: **APPOINTMENT OF DEPUTY CHAIRPERSON**

1.0 REASON FOR THE REPORT

Members are asked to elect a new Deputy Chairperson of the Eastern Bay of Plenty Joint Committee.

2.0 BACKGROUND

Councillor Lyn Riesterer was appointed Chairperson at the 8th December 2015 Eastern Bay of Plenty Joint Committee. The appointment of the Deputy Chairperson was deferred to the March 2016 meeting.

3.0 VOTING PROCESS

Clause 25 of Schedule 7 of the Local Government Act 2002 sets out the voting system for certain appointments including the election or appointments of the positions as follows:

25 Voting systems for certain appointments

- (1) This clause applies to—
 - (a) the election or appointment of the chairperson and deputy chairperson of a regional council; and
 - (b) the election or appointment of the deputy mayor; and
 - (c) the election or appointment of the chairperson and deputy chairperson of a committee; and
 - (d) the election or appointment of a representative of a local authority.
- (2) If this clause applies, a local authority or a committee (if the local authority has so directed) must determine by resolution that a person be elected or appointed by using one of the following systems of voting:
 - (a) the voting system in subclause (3) (**system A**);
 - (b) the voting system in subclause (4) (**system B**).
- (3) System A—
 - (a) requires that a person is elected or appointed if he or she receives the votes of a majority of the members of the local authority or committee present and voting; and
 - (b) has the following characteristics:
 - (i) there is a first round of voting for all candidates; and
 - (ii) if no candidate is successful in that round there is a second round of voting from which the candidate with the fewest votes in the first round is excluded; and

- (iii) the fewest votes in the previous round is excluded; and
 - (iv) in any round of voting, if 2 or more candidates tie for the lowest number of votes, the person excluded from the next round is resolved by lot.
- (4) System B—
- (a) requires that a person is elected or appointed if he or she receives more votes than any other candidate; and
 - (b) has the following characteristics:
 - (i) there is only 1 round of voting; and
 - (ii) if 2 or more candidates tie for the most votes, the tie is resolved by lot.

RECOMMENDATION:

1. That the report “Election of Deputy Chairperson” be received.
2. That the Committee determine whether System A or System B is used to determine the election of a new Deputy Chairperson.
3. That _____ be appointed as Deputy Chairperson of the EBOP Joint _____ Committee for the next year.

Dale Ashford-Hill
SECRETARY
Ōpōtiki District Council

3 March 2016



To: **EASTERN BAY OF PLENTY JOINT COMMITTEE**

Meeting Date: **9 MARCH, 2016**

Written by: **JOHN GALBRAITH, EXECUTIVE CHAIR, TOI-EDA**

Subject: **TOI MOANA GROWTH STUDY – ACTION PLANS**

3.0 EXECUTIVE SUMMARY

Following the completion and launch of the Toi Moana Growth Action Plan Summary on 29 October, the Bay of Connections Governance and Management Groups have moved into implementation phase with the appointment of regional and government leads for each of the 9 action areas.

The Action Plan includes 110 separate actions and over 20 organisations involved as project leads.

Not all actions will progress to implementation, but getting a reasonable proportion up and running over the next 3 years will require a substantial commitment of resource and expertise.

This report identifies the 14 or so current or near term actions that are likely to be progressed in the Eastern Bay through 2016. This is likely to challenge the modest levels of currently available ED funding in the sub-region.

4.0 REASON FOR THE REPORT

To update Joint Committee members on progress with the action planning and implementation phase of the Toi Moana Growth Study, including reference to actions of relevance to the Eastern Bay.

5.0 BACKGROUND

Following the launch of the Growth Study in May, the study report and opportunities identified were consulted through sub-regional workshops in June and a regional hui at Te Uru Taumatua, Taneatua, 25 August.

Out of the workshops, draft action plans were developed by the RGS Action Group, under leadership of the RGS Governance Group. Both groups were based on the existing Bay of Connections Governance and Management Groups, with the addition of district council and MBIE, MPI representatives. The Eastern Bay additional reps were:

- Governance: Mayor John Forbes
- Action Groups: Russell George, Marty Grenfell

The Regional Growth Strategy Action Plan Summary was launched by Ministers Joyce, Flavell and Tolley in Rotorua 29 October.

Actions included in that plan were generally those that fell into the categories:

- Actions that can happen without Central Government support
- Underway or have support from Central Government (“green” light)
- Requiring further information/consideration through action plan development and will generally be subject to contestable funding. (“amber” light)

A further category previously marked as “red” – where Central Government support is not a priority at this time, were generally been left out of the action plan summary distributed at the time of the launch, but have been retained in the subsequent action planning process.

From the previous action plan documents, the following is a summary of Central Government “green” light projects:

Aquaculture (Ōpōtiki Harbour - geotech, design & price tender)	\$3M
Manuka	\$ 80k
Education (youth/rangatahi training)	\$ 70k
Geothermal	\$ 10k
Maori land ecosystem	\$ 225k
Total	\$3,385k

Outside of the Ōpōtiki harbour project, there was little Central Government funding immediately available for projects in the Eastern Bay.

For other projects in the Eastern Bay, funding will need to be sought through the normal contestable funding pathways, e.g. Callaghan, Primary Growth Partnership, Sustainable Farming Fund, Youth Guarantee, Afforestation Grants, and Maori Innovation Fund etc. A full list of potential Government funding sources is contained in Attachment 1. It is uncertain how much these pathways will be “greased” for applications for RGS Actions.

The guideline for eligibility for Government support through contestable funding is a reasonably well developed business case. A number of funds, e.g. Irrigation Acceleration Fund, Callaghan, require 50 to 60% funding contribution by the applicant.

Development of business case can be a resource-hungry process. Some funds, such as Te Punaha Hiringa (Maori Innovation Fund) and Maori Agribusiness: Pathway to Increase Productivity, can provide assistance at an early stage, but most require significant time and expertise to develop a competitive business case.

Regional Action Plan

Following the launch of the Growth Study, it was agreed that formal communications with the District Councils on the action planning and delivery stages would be maintained via the Triennium. The Bay of Connections Governance and Management Groups (BOC MG) reverted to their previous membership but with the addition of Paul Stocks, as Senior Regional Official, to the Governance Group and other MBIE and MPI representatives assisting the Management Group.

Regional and central government leads have been identified for the 9 action areas:

	Regional Lead	Government Lead
Agribusiness	Tanira Kingi (Scion)	Stacey Whitiora (MPI)
Aquaculture – Ōpōtiki	John Galbraith (Toi-EDA)	John Doorbar (MBIE)
Aquaculture - Trout	Cheryl Lewis (RAO)	Dan Lees (MPI)
Education & Skills	Greg Simmonds (Priority One)	Terry Collett (Min Ed)
Forestry	John Galbraith (FWAG)	Stacey Whitiora (MPI)
Geothermal	Mellisa Climo (GNS)	Jamie Kerr (MBIE)
Horticulture	Greg Simmonds (Priority One)	Stacey Whitiora (MPI)
Maori Land Optimisation	Riri Ellis (He Mauri Ohooho)	Rachel Jones (TPK)
Visitor economy	Mark Rawson & industry champion Graeme Marshall	Jared Humm (MBIE)
Water	Ian Morton (BOPRC)	Stacey Whitiora (MPI)

As identified in the full Action plan documents, there are over 20 different organisations identified as leads and a larger number of partners/collaborators across each of the 110 separate actions in the plan. The role of the Action Leads is to liaise/coordinate/support the project leads in each case and report on progress.

The general intention of the BOC MG is to progress amber (and possibly red) actions to green where possible and through to implementation over the next 3 years.

The first full Action Leads meeting will be held on 1 March and further updates will be verbally reported to the Joint Committee.

6.0 RELEVANCE TO EASTERN BAY OF PLENTY

Attachment 2 includes a summary of the current and likely near term (6 to 9 months) actions of relevance to the Eastern Bay.

This list does not include:

- Aquaculture Government funding for the validation phase of the Ōpōtiki Harbour Transformation is well known and otherwise described.
- Tourism/Visitor Economy The current action list is only partly developed and is lacking inclusion of specific E. Bay initiatives and opportunities. We are inviting the Action Lead to visit the sub-region to update.
- Agribusiness While a number of opportunities and actions are applicable in the east, such as Manuka, dairy goat and sheep options, these have not yet been developed with local players from an action plan point of view.

The priority actions being advanced in the Eastern Bay at present are:

Maori land ecosystem / Horticulture: The Omaio, Te Kaha and Raukokore kiwifruit expansion/irrigation/community water projects fit very well in this space.

Toi-EDA championed the inclusion of these projects in the action plans and Ian Morton, BOPRC, has strongly supported the business case development of the

Omaio projects including within the Water action plans. He convened a meeting of all parties and Government departments in Whakatāne in December, which has resulted in a high level of support across all relevant agencies.

An excellent example of an “All-of-Govt” approach.

Forestry Improved supply chain efficiency to market by rail extension/container terminal at Kawerau.

Water Water bottling export industry and Resource data actions.

Education (youth/rangatahi training) This action will be advanced at a regional level, probably with additional funding from e.g. Min Ed, under the umbrella of the Tertiary Implementation Strategy Group. The TIS is planning to form a steering group to scope the work and will go through an RFP process for provider(s) in the second quarter of 2016.

This area of work complements the Toi Workforce project (Ōpōtiki Youth to Employment, supported by Todd Foundation), and youth-related initiatives at Industrial Symbiosis Kawerau, so there may be some opportunities for interaction and support after mid-2016.

7.0 DISCUSSION

Progressing a reasonable proportion of the over 100 actions in the Toi Moana Growth Action Plan to funding and implementation over the next 3 years will require a substantial commitment of resource and expertise.

It is likely that where actions are not already part of an EDA or other organisation’s work plan, they will have a strong case for being included, arising as they have, from a comprehensive review of the regional economy and its growth opportunities.

This is likely to challenge the modest levels of currently available ED funding in the Eastern Bay.

RECOMMENDATION:

1. **THAT** the report "Toi Moana Growth Study – Action plans” be received.
2. **THAT** the Committee notes the likely demand for additional resources and expertise required to implement the identified action plans in the Eastern Bay.

John Galbraith
EXECUTIVE CHAIR, TOI-EDA

3 March 2016

Attached to this report:

- Central Government Programmes and Funds Available to Support Regional Development
- Summary of current / near term action plans in Eastern Bay

Central Government Programmes and Funds Available to Support Regional Development

Programme	Provider	Brief description/purpose
Kaitakewaenga Maori	IRD	A tax advisory service for Maori business which can be accessed through most IRD offices. Also useful for Maori sports clubs, non-profit body, marae or kohanga Maori.
Business.govt.nz	MBIE	A resource for all business services including; Starting/stopping a business; Staff & HR; Tax and Reporting; Laws and Regulations; Support and Advice
Te Punaha Hiringa (Maori Innovation Fund)	MBIE	Te Punaha hiringa Maori Innovation Fund - provides assistance to Maori collectives to gain understanding and knowledge needed to realise economic potential of their assets. The first year of funding is focussed on Commercial Advisors Scheme and a Governance and Management Development Scheme.
Tourism Growth Partnership funding	MBIE	The Tourism Growth Partnership invests in projects to grow the tourism sector in New Zealand. Co-funding available across a wide range of innovative tourism projects that will help the New Zealand tourism industry as a whole – and create jobs in New Zealand.
Afforestation Grants Scheme	MPI	Afforestation Grant Scheme - designed to fund organisations or individuals that own or have a right to use land to plant between 5 and 300ha of new forest.
Aquaculture Planning Fund	MPI	Aquaculture Planning Fund - established to fund regional councils with the costs of coastal planning for aquaculture developments.
Erosion Control Funding Programme (East Coast)	MPI	Erosion Control Scheme - MPI provides grants to Gisbourne district landholders to help reduce wide-scale erosion problems.
Irrigation Acceleration Fund	MPI	Irrigation Acceleration Fund - funding to support regional rural water infrastructure, strategic water management studies, and community irrigation schemes.
Māori Agribusiness: Pathway to Increase Productivity	MPI	A partnership between Māori primary sector asset owners and MPI, to identify tailored support for asset (primarily Māori freehold land) owners.
Permanent Forest Sink Initiative	MPI	Assists landowners to establish new, permanent forests to receive carbon credits.
Primary Growth Partnership	MPI	The Primary Growth Partnership (PGP) is a joint venture between government and industry, that invests in long-term innovation programmes to increase the market success of the primary industries. Industries which are within scope of the PGP include pastoral, arable, horticulture, seafood (including aquaculture), forestry and wood products and food processing. Investment programmes can include supporting projects targeted at points along the value chain including education and skills development, and technology transfer.
Sustainable Farming Fund	MPI	Funds farmer, grower, forester-led applied research and extension projects.
Sustainable Land Management Hill Country Erosion Programme	MPI	Regional initiatives to target govt support to protect erosion-prone hill country while recognising farmers seeking to retain maximum practical production from their land.

Training programmes for Work and Income clients	MSD	Regional Commissioners (RC) have access to MSD funding which they can use to purchase employment programmes and wage subsidies. There is a degree of flexibility as to how RCs use this funding. The purpose of the funding is to support Work and Income clients to undertake short-term skills based training leading to an employment outcome.
Better By Capital	NZTE	Programme that provides assistance to investment-ready companies in NZTE's F700 or Managed Foundation portfolio to access Investor networks, understand how to appeal to the investor market and get help learning how to pitch and sell the story of a product.
NZTE's BAU and Services	NZTE	For each regional growth plan a senior official has been appointed to coordinate all of government input and to be the main point of contact for that region. NZTE has teamed up Customer Facing teams alongside the senior officials at MBIE to represent our customers voice (business) generally.
Regional Business Partners	NZTE	A network of regional organisations that provide information and advice to New Zealand business looking to grow and innovate. Available across 14 regions
Regional Investment Attraction	NZTE	NZTE's regional investment attraction programme is a partnership with regions to help drive economic development. <ul style="list-style-type: none"> NZTE's Capital team works with regional economic development agencies (REDAs) and private sector stakeholders to identify, assess and develop significant export and economic infrastructure opportunities for matching with investors. This work features the use of co-funded pre-investment modelling, the building of business cases for investor matching, use of NZTE Strategic Investor Fund for investor feasibility studies and the Visiting Investors. Regional investment profiles providing a high level value proposition for each of New Zealand's regions have been published and are in use as a location guidance tool for investors. The profiles will be reviewed, updated and refreshed in FY15/16. Capability development workshops covering all economic development regions help build knowledge and relationships, and ways for NZTE's Capital team, MBIE's Visiting Investor Programme and REDAs to work more effectively together to attract investment.
Te Punaha Hihiko - Vision Matauranga Capability Fund	MBIE	Invests in programmes that contribute to the development of skilled people and organisations undertaking research that support four themes of Vision Matauranga; 1) Indigenous Vegetation: Contributing to economic growth through distinctive research and development; 2) Environment: Achieving environmental sustainability through iwi and hapū relationships with land and sea; 3) Health: Improving health and social wellbeing; and 4) Mātauranga: Exploring indigenous knowledge and science and innovation. Vision Mātauranga aims to unlock the science and innovation potential of Māori knowledge, resources and people for the benefit of New Zealand.

Summary of current / near term action plans in Eastern Bay

Priority area	Opportunities	Actions	Action Lead	Key Partners	Next steps/Key Milestones
Education & Skills	Development of a youth/rangatahi education and skills strategy.	1. The Bay of Plenty education leadership and advocacy group to develop a brief for, and oversee development of, a Bay-wide youth/rangatahi education and skills strategy, focused on the needs of the region's young Māori.	Bay of Plenty Tertiary Intentions Strategy Reference Group	Central Govt, local Govt, He Mauri Ohooho, education providers	MoE presenting their thoughts to TIS leadership group 4 March.
	Develop teachers' understanding of local industry.	1. Undertake a programme of teachers' experience days.	Ministry of Education	NZKGI, Avocado & aquaculture industries, Priority One, Toi-EDA	MoE efforts to link schools and industry to develop partnerships and pathways for students and learning.
Forestry	1. Improved market access for processed wood products.	2. Improve supply chain efficiency to market by rail extension / container terminal at Kawerau	Industrial Symbiosis Kawerau (ISK)	Kawerau District Council, Kawerau industry, KiwiRail, NZTA, MBIE	1) ISK to develop a high level proposal and visual aide. 2) ISK to develop options for funding the rail siding - business case.
		3. Identify and address existing barriers to export market development.	FWAG	MPI, MFAT, NZTE	Research due mid-year. Meeting organised with Guy Tapley, NZTE for 15 March with ISK Steering Group to review progress and identify remaining issues for attention.

Priority area	Opportunities	Actions	Action Lead	Key partners	Next steps/Key Milestones
Horticulture	1. Unlocking Māori land for horticulture	1. Promote kiwifruit as an opportunity for iwi/trusts and develop assessment tools to identify suitable land to increase productivity.	He Mauri Ohooho	Te Awanui Huka Pak Māori trusts, Tuhono Whenua, Kiwifruit Māori Grower Council (to be established), Zespri, NZKG, Toi EDA, FOMA, TPK, He Mauri Ohooho	*Action Lead to further develop the action with the key parties.
	1a. Omaio kiwifruit expansion	1. Undertake a strategic water resource assessment and validate development opportunities for increasing kiwifruit production in the area.	To be determined	Industry, Omaio hapu, TPK, BOPRC, He Mauri Ohooho, Toi EDA, MPI, ODC, MFE	Progressing well. Key issues include water access and use, and access licences. MoE and MSD working with Omaio and Toi-EDA re future training needs.
Māori Land Utilisation	1. To build a Māori land eco-system to support optimisation.	a. Enable leadership and governance of He Mauri Ohooho over the implementation of this action plan.	Māori Advisory Group & He Mauri Ohooho Implementation Team		Appoint Eastern BOP / Whakatāne representatives.
	2. Māori Land Cluster Project – engage and support Māori land optimisation at enterprise level	Engage and support five land cluster projects that seek to fast-track optimisation and innovation; one cluster for each sub-region for example Whakatāne, Rotorua, Western BOP, Eastern BOP, Taupō.	Māori Advisory Group	He Mauri Ohooho Implementation Team & Māori trusts Other: MPI, TPK, MBIE, CRIs, DairyNZ, Beef + LambNZ	Confirmed funding for two clusters. Develop project details and implement. Secure funding for remaining 3 clusters, develop project details and implement. (Jun 16-Jun17)
	3. Maori youth in skills capability	Establish a greater uptake by Maori youth in skills and development training that aligns to employment opportunities through youth incubator, scholarships, internships, youth ambassador, and integration into existing sector initiatives.	He Mauri Ohooho Implementation Team	MOE, MSD, TPK, MBIE, MPI	Development of 3 initiatives and confirmed funding to implement 2 of the 3. Finalise project details for 2 confirmed initiatives and implement. (Jun 16)

Priority area	Opportunities	Actions	Action Lead	Key partners	Next steps/Key Milestones
Water	1. Resource data – soil	1. Review and update NZ Land Use Data to enable landowners to validate development opportunities including mapping the current state potential against future land use types.	BOPRC	Land Care Research, MPI, MFE	Current focus - prepare 1 page summaries of each opportunity. Plan to be available in Feb '16. Includes gathering all existing data / reports and putting onto web portal. Then round table discussion with all key parties to scope up opportunity and confirm next steps, incl responsibilities.
		2. Undertake precision soil mapping of key regional areas to enable existing landowners to increase production within sustainable limits.	Agrioptics	Land Care Research, MPI, MFE	
	2. Water bottling export industry	1. Work with existing industry players (Otakiri Water, Antipodes Water and Living Water) to understand industry growth potential and key constraints.	Whakatāne District Council	BOPRC, Transit, NZTE, MPI	(to be updated after Action Leads meeting 1 March, '16)
		2. Develop understanding of future water requirements versus other users such as agriculture, horticulture and municipal.			
		3. Support relevant resource and land use consents to attract new investment in water bottling plant.			



To: **EASTERN BAY OF PLENTY JOINT COMMITTEE**

Meeting Date: **9 MARCH, 2016**

Written by: **JOHN GALBRAITH & BARBARA MACLENNAN**

Subject: **PATHWAYS TO WORK**

1.0 EXECUTIVE SUMMARY

This report describes scope and progress of the Toi-EDA Workforce Development project (commenced late 2014) and the current Pathway to Work project in the Ōpōtiki Harbour Transformation, which is a joint workstream between ODC, Toi-EDA and Whakatōhea Maori Trust Board.

The report also recognises leading work in Kawerau's Mayor's Taskforce for Jobs / Social Sector Trials initiatives.

2.0 REASON FOR THE REPORT

The report was requested to inform and update the Joint Committee on this important piece of economic development work.

3.0 BACKGROUND

The overall objective of the programmes of work described in this report is to maximise the employment opportunities for local people in the expanding kiwifruit and new aquaculture industries in Ōpōtiki and the Eastern Bay and transform the socio-economic future for the area.

The Eastern Bay of Plenty sub-region unfortunately features as one of the nation's most deprived areas. The sub region features high welfare dependency, crime, young population living in poverty, low skill base and limited fulltime employment opportunities.

However the sub region also has some exciting opportunities to change that situation:

- The kiwifruit industry in the Eastern Bay has recently signalled significant expansion plans, expecting to lift output revenue from \$120 million pa to over \$200 million within the next 8 to 10 years and is currently investing approx. \$25M in new packhouse and storage infrastructure.
- Development of the new sea farm off the coast of Ōpōtiki continues and the procurement process has started for the harbour transformation

project. The new industry is expected to be employing over 300 people producing \$40 to 50 million pa of export product within 12 years.

The current challenge for local employment in the kiwifruit industry is its high level of seasonality – from a permanent workforce of less than 100, the industry expands to over 1800 people at the height of its season. Many of the roles are filled by RSE workers and backpackers.

The new aquaculture industry will also have some seasonality, but it is expected that pattern will complement the kiwifruit requirements, with harvest commencing as the peak of kiwifruit passes.

Toi-EDA is leading a workforce development project which is intended to capture the synergies of employment timing and skills between the two industries and to maximise local employment opportunity on a more permanent basis. It will also demonstrate how local communities and industry can "bring to life" the Bay of Plenty Tertiary Intentions Strategy (TIS), so that training and education is tailor made for both local people and real industry needs.

Project Phase One:

The first phase of the project, focussing on kiwifruit industry employment, was completed in early 2015¹ and makes use of the methodology already developed by Ōpōtiki District Council along with Martin Jenkins and Associates for the aquaculture projects². (The Martin Jenkins work, reported in early 2014, was supported by BayTrust and identified the workforce requirements for the harbour development and aquaculture, the ongoing demands for labour and skills, the current availability of people and skills and the range of training courses and providers available in the sub-region).

The Phase One Project was funded by the major kiwifruit companies in the E Bay and Toi-EDA, with the objective to establish the same level of knowledge regarding kiwifruit workforce numbers, skills and timing as that already established for aquaculture.

Project Phase Two

Phase Two of the Project commenced in July 2015. It is currently funded by BayTrust, Toi-EDA, TPK and supported by industry. This phase entails focussed planning to ensure joined up strategy between industry leaders and planners, Iwi, social development, training and education, to deliver the right skills at the right time for Eastern Bay of Plenty developments. This planning is vital to ensure both the potential for existing underutilised local labour to refocus and train for emerging jobs, and for the sub region to be focussed on attracting, training and retaining the additional labour and skills required. The scope also includes the machine operation and construction skill requirements for the harbour and processing facility construction phase of the aquaculture development.

Depending on funding support, we intend to expand the scope of the construction skills and workforce workstream to take in planning for other construction projects planned for the Eastern Bay. This will expand the timeframe for construction job opportunities outside of the harbour build window (currently 2018-20) and provide a

¹ AIMS Ltd, Feb 2015. Toi-EDA Workforce Development Project – Kiwifruit.

² Martin Jenkins, July 2014. Opotiki Harbour and Aquaculture Development – Opportunities, issues and implications for workforce development.

longer term employment opportunities for locals prepared to undertake relevant training and qualification.

- Whakatōhea / BOPPOLY Marine Skills Training. Bay of Plenty Polytechnic commenced offering Ōpōtiki-based training in association with WMTB in May 2015. The initiative arose from connections established at the Bay of Connections Regional Aquaculture Organisation. The 26 week course for Certificate in Maritime & Fishing Technology (Level 3) and Credits toward National Certificate in Seafood Vessel Operations - Nautical skills (Level 3) will run again in 2016 with a full complement of 30 students.

The Mussel Companies, along with BoP Polytech arranged work placements for students in various industry roles including at North Island Mussels Ltd and in Coromandel. Two of the graduates are being recruited to new roles in the Ōpōtiki Mussel businesses.

Opotiki Harbour Validation workstream The Government's decision to fund the geotech, design and price offer stage of the harbour procurement came with a requirement to advance a number of workstreams to support the business case for the harbour investment. A key workstream is Pathways to Work, which has the expected outcomes to:

- Identify and create pathways to work including through training and pastoral support to ensure local people who are un-employed, under-employed or transitioning through education or training into work can gain jobs/career opportunities in all aspects of the project.
- Investigate linkages and complementarity with other seasonal types of employment, particularly kiwifruit, and how to minimise barriers to the seamless movement of workers between seasonal employment opportunities.

These outcomes align closely with the Toi-EDA workforce development project and form an important subset of the wider project.

4.0 UPDATE

An update of recent events and progress:

- ❖ Local Network Meeting, Opotiki, 26 November – bringing training, education, pastoral care and Iwi together to identify opportunities and barriers and make progress
- ❖ Community Update Briefings – Opotiki 7 December and Whakatane 8 December. Attracted over 60 locals between the two events.
- ❖ Ōpōtiki Training and Education Poster 2016_ – Featuring available education and training pathways through senior school and up to Level 4 of NZQA through ten providers. (Attached)
- ❖ Entered a relationship with the Todd Foundation in support of an Ōpōtiki Youth to Employment approach
- ❖ Co-operated with Ōpōtiki District Council on a Pop-Up Shop - 28 and 29 January. Featured ten employer, education and training stands with information and support to make applications, plus a Toi-EDA stand about economic development and the Workforce Project

Next steps - Ōpōtiki:

- ❖ develop a new College level education pathway into engineering trades
- ❖ planning for construction pathways next priority

- ❖ WIT – free bus service
- ❖ cadetships with local kiwifruit industry
- ❖ community-wide involvement in planning youth to employment pathways
- ❖ drugs in the workplace / explore common training
- ❖ initial plans made by the local network in November 2015
- ❖ information session at the College/Te Whanau a Apanui Area school
- ❖ Omaio planning for pathways into kiwifruit industry
- ❖ part-time learning options for those in work wanting to position themselves

Next steps - Kawerau and Whakatane:

- ❖ 'current state' and good practice/learnings in Kawerau and Whakatāne (social sector trials investment around youth)
- ❖ re-connect with December attendees and others who have indicated interest to date
- ❖ work with stakeholders to identify current gaps/opportunities for Pathways to Work focus in Whakatāne/Kawerau .

Omaio High – value land use initiatives Toi-EDA championed the inclusion of this hapu-led project in the Toi Moana Growth Study and is supporting the development of action plans in association with BOPRC and various government departments. The latter includes coordinated actions by MSD and Ministry of Education on training, education and transition to work for local candidates.

5.0 RELEVANCE TO EASTERN BAY OF PLENTY

The high level of relevance of this suite of workstreams to Eastern Bay economic and social development is well described in the Background section.

The Toi-EDA Board believes that the sub-region's challenges are best addressed by an effective combination of:

- Economic development – supporting the development of key sectors in the Eastern Bay economy to grow employment and wealth; and
- Local employment capability and uptake - maximising the employment opportunities for local people in both existing and new industry jobs.

Toi-EDA also recognises the leading work being carried out in Kawerau under the banner of Mayor's Taskforce for Jobs and Social Sector Trials initiatives.

We have noted the opportunity to expand the scope of the construction skills and workforce workstream to take in planning for other construction projects planned for the Eastern Bay. This extension will be dependant on funding.

RECOMMENDATION:

1. **THAT** the report "Pathways to Work" be received.

John Galbraith
Executive Chair, Toi-EDA

Barbara MacLennan
Project Manager – Toi-EDA Workforce Project

3 March 2016



To: **EASTERN BAY OF PLENTY JOINT COMMITTEE**

Meeting Date: **9 MARCH 2016**

Written by: **AILEEN LAWRIE**

Subject: **ŌPŌTIKI HARBOUR TRANSFORMATION PROJECT UPDATE**

1.0 EXECUTIVE SUMMARY

The Government commitment the Ōpōtiki Harbour Transformation project means the project is now on track towards letting a contract for the construction work in 2017-2018. A Memorandum of Understanding between Government, BOPRC and ODC is now driving a work programme of 16 individual projects across the agencies designed to both deliver the wider project and to maximise the outcomes for the benefit of the Eastern Bay of Plenty. This report provides an overview of that project structure.

2.0 REASON FOR THE REPORT

To update the Joint Committee on the Government decision of October 2015 and of the expected progress of the project over the next 18 months.

3.0 BACKGROUND

In October 2015 Ministers Joyce, Tolley and Flavell announced the “down payment” of \$3m on the Ōpōtiki Transformation Project. The announcement marks the Government’s commitment to the overall project. Partnerships with a range of entities have contributed to this outcome.

The announcement is being given effect to through a Memorandum of Understanding between ODC, Government and BOPRC, to work collaboratively to complete the final design stage to the point of being ready to accept a tender. The work also includes confirming a number of parameters for Government to make the final commitment of \$26m. Alongside this a number of conditions of the BOPRC \$20m Heads of Agreement will be worked through so that all funders are ready to fully commit funding in July 2017.

The announcement was very well received in the Ōpōtiki District, and went further than the agreed messaging had suggested. Unfortunately the agreed messaging had been circulated far and wide and ended up being the messaging

that made it into most mainstream media reports. While the majority of the Ōpōtiki District understood the very strong Government commitment, there seems to be scepticism in the wider Bay of Plenty. We have worked with

Government officials to try to rectify this and the attached one pager has been approved by Government.

The MOU between the parties references a number of workstreams (refer attached project structure). These can be categorised into those that are required to achieve the project and those that can maximise opportunities. There are a total of 16 workstreams that are “owned” by the various partners.

Work is well underway with the main capital works project, with a notice to tenderers having been sent out in late January. A competitive early contractor engagement procurement process has commenced for the majority of the design work, and a competitive tender process for additional geotechnical work will also be undertaken. One of the more interesting parts of our request for a Statement of Interest and Ability (often known as an EOI) is that one of the non-financial attributes is the extent to which the contractor can contribute to the Pathways to Work project (being led separately by Toi-EDA). This is aimed at maximising employment opportunities for the Eastern Bay of Plenty community.

One of the stated aims of government is to both broaden the use and users of the consented sea space, and to investigate further consented areas. A workstream supporting innovation has also been committed to by the parties.

A Project Implementation Board has been put in place to oversee the delivery of the project. This comprises high level representatives of each of the funders as well as the Whakatōhea Māori Trust Board. A diagram of the individual projects and the management structure is attached for information. Strong relationships are already being forged as we deal with project and political challenges of four organisations that are very differently structured with very different cultures. John Galbraith continues in the role as Programme Manager, contracted directly and separately to Toi-EDA duties.

4.0 RELEVANCE TO EASTERN BOP

By the early 2020s the Ōpōtiki Harbour Transformation Project is conservatively estimated to increase the GDP of the Eastern BOP by \$31-43M, or \$41-\$55M Nationwide. This is based on 80% of the consented area producing mussels. In the longer term, higher value uses are likely with flow on economic effects across the eastern Bay of Plenty.

The MOU with Government seeks to increase the benefit to the eastern BOP and the wider region. We expect that Government will support the relevant workstreams where they can to ensure benefits are maximised.

The Pathways to Work project is being led by Toi-EDA, and has application both across industries, and Eastern Bay of Plenty wide.

Ōpōtiki District Council has asked for Bay of Connections support for the innovation work stream, as the objectives align with those of the Regional Aquaculture Organisation.

5.0 FINANCIAL BUDGET IMPLICATIONS

Government has committed \$3M to the Geotech-Design-Cost workstream.

To date, Toi EDA's core funding has enabled oversight of both phases of Pathways to Work initiative. Substantial progress has been enabled by contributions from BayTrust, MSD, and the kiwifruit industry, along with information generated through ODC efforts. More recently Toi EDA has entered a

partnership with the Todd Foundation with a focus on Youth to Employment. This is for an exploratory stage and will hopefully enable a more substantive proposal. Further funding will also be sought from industry contributions, regional trusts, and government agencies. Toi's charitable status enables funding requests from some philanthropic avenues which are more difficult for Government and Local Government entities to access. In order to leverage additional funding it is important to be able to demonstrate contribution by Districts which will draw benefit from Pathways to Work effort.

Further discussion is required about who will fund the planning requirements to provide for any expansion to the Marine Farm consented area. Legislative functions to enable any new space are shared between MPI and BOPRC.

Other costs either lie with ODC or with the commercial operators. For many of the workstreams, costs are business as usual costs, or a matter of re-prioritising current spending.

Currently the Innovation Workstream does not have a clear leader, although the objectives align closely with the Bay of Connections Regional Aquaculture Organisation.

6.0 COMMUNITY INPUT

The Ōpōtiki community has had input into the harbour project through Long Term Plans since 2002. Successive community surveys have shown high levels of public support (75-89% over different surveys), reflecting among other things, the partnership approach that the project has taken.

7.0 CONCLUSION

The Project overview is provided to ensure the joint committee are aware of the details of the government announcement and the progression of the project from here. Work streams are currently underway to ensure the overall benefits of the project is achieved, but also to add value and to maximise opportunities that arise.

RECOMMENDATION:

- 1. THAT the report "ŌPŌTIKI HARBOUR TRANSFORMATION PROJECT UPDATE" be received.**

Aileen Lawrie
CEO, Ōpōtiki District Council

3 March 2016

Attached to this report:

- One page flyer capturing the government announcement
- The Project Management structure and list of individual projects

16 February 2016

Ōpōtiki Harbour Development – in it together

The Government is right behind our redevelopment of the Ōpōtiki Harbour. The revitalisation project focuses on building a harbour entrance that's navigable year-round to allow marine produce to be processed locally, and to unlock wider potential for other marine industries.

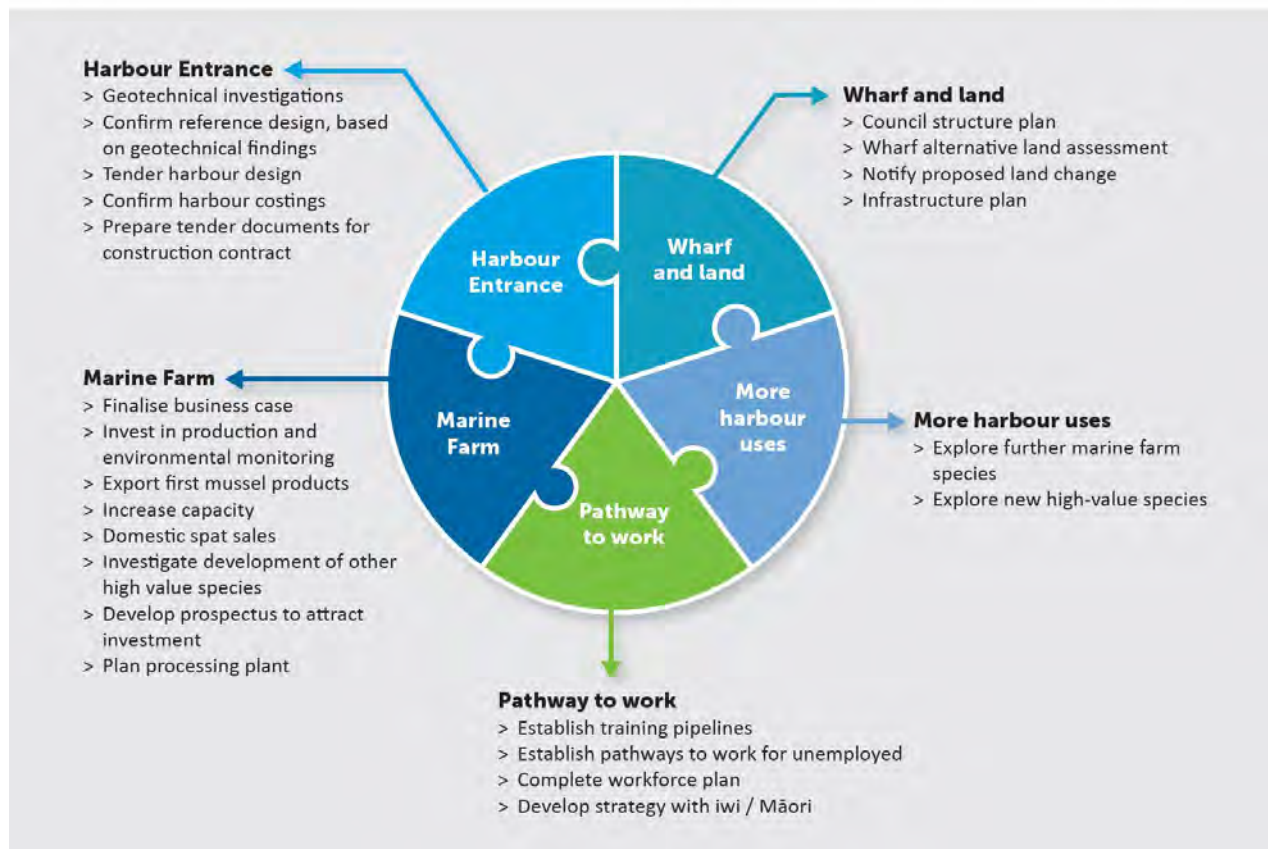
The redevelopment will bring in \$41-55 million per year in additional wealth and generate up to 220 new, sustainable, long term and skilled jobs.

The Bay of Plenty Regional Council has committed \$20 million, and the Government is providing up to \$3 million over the next two years to do the detailed planning that's needed for the tender process. Business partners are investing in a marine farm, processing facilities and wharves.

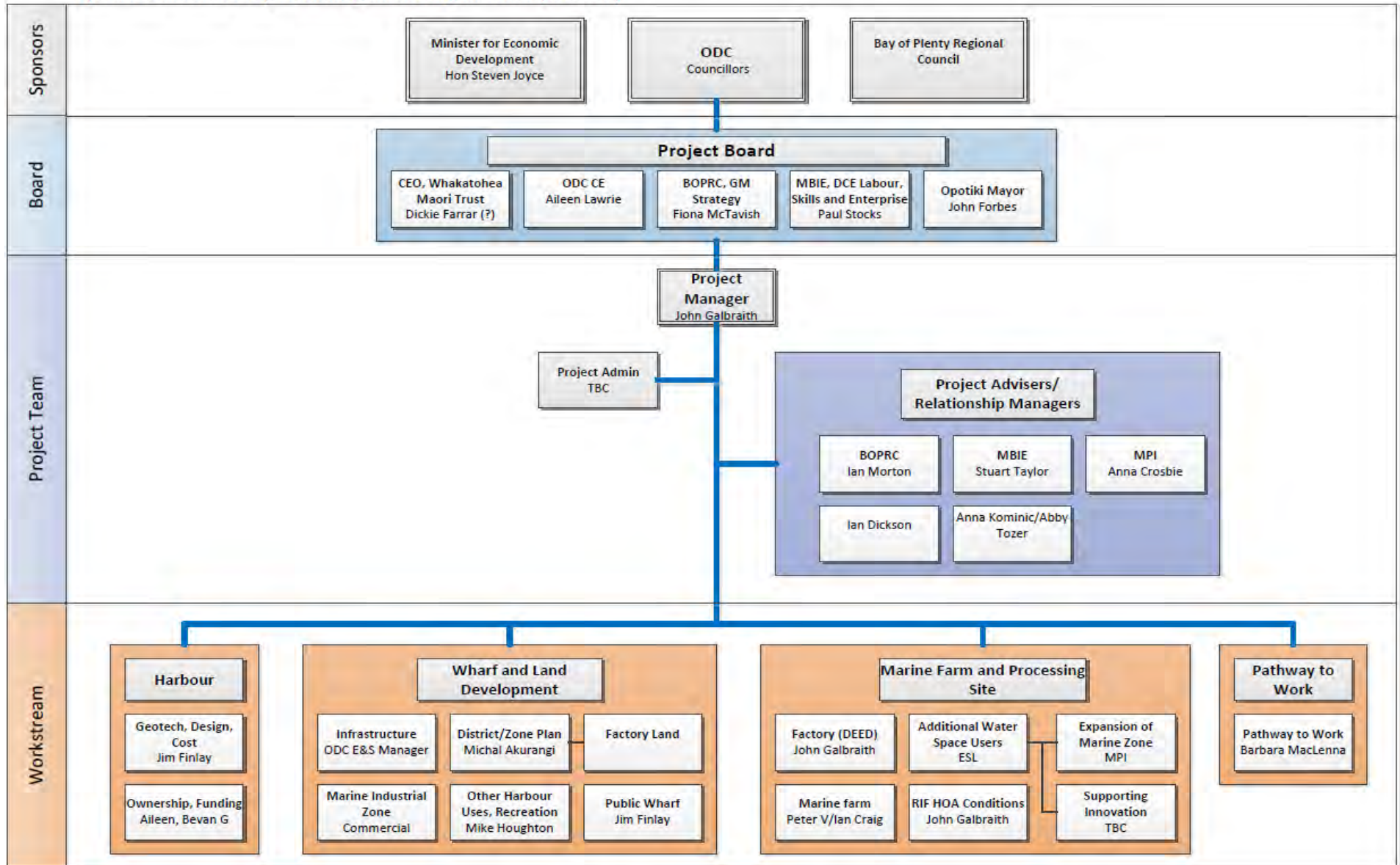
We are working to pull all the puzzle pieces together to allow the Government to commit a further \$26 million to the Ōpōtiki Harbour in 2017/18.



> Conceptual image of Ōpōtiki Harbour Development with Marina



Opotiki Validation Project Management Organisation (2015-17)





To: **EASTERN BAY OF PLENTY JOINT COMMITTEE**

Meeting Date: **WEDNESDAY 9 MARCH 2016**

Written by: **SENIOR PLANNER, BAY OF PLENTY REGIONAL COUNCIL**

Subject: **DRAFT EASTERN BAY – BEYOND TODAY**

1.0 REASON FOR THE REPORT

The purpose of this report is to:

- Seek approval from the Joint Committee for Draft Eastern Bay – Beyond Today.
- Provide an overview of the next steps in the process, including engagement around Draft Eastern Bay – Beyond Today.

2.0 DRAFT EASTERN BAY – BEYOND TODAY

The Draft Eastern Bay – Beyond Today document has progressed to a stage where it is ready for input from key stakeholders. Eastern Bay – Beyond Today is the spatial plan (or ‘development plan’) for the Eastern Bay area. It covers economy, people and culture, environment and infrastructure themes. A copy of the Draft Eastern Bay – Beyond Today is attached to this report. Approval is being sought from the EBOP Joint Committee (EBOPJC) to publically release the Draft Plan, and engage with stakeholders.

Draft Eastern Bay – Beyond Today is the strategic level of the spatial plan. Two key components are outcomes for each of the four themes, and key opportunities for the Eastern Bay. The Key Opportunities graphic lists five headings with further explanation of the areas of focus within those headings. The Key Opportunities have been developed with the direction of the Eastern Bay Spatial Plan Subcommittee.

The Key Opportunities highlight the aspects that need to be worked on to optimise the potential of the Eastern Bay. These are:

- Connecting the Eastern Bay. Road and rail connections within the Eastern Bay, and to other parts of the Bay of Plenty region and North Island. Also connections to the rest of the world that are economically and socially critical.
- Growing a high value economy. The economic sectors that present the best potential in the Eastern Bay.
- Education for living and working in the Eastern Bay. Ensuring the Eastern Bay labour force is ready for current and future employment opportunities (maximising the potential of people).
 - Clean energy. Realising the potential for Eastern Bay to be energy self-sufficient.

- Sustainable communities. Ensuring Eastern Bay remains a great place to live, while understanding and responding to demographic and global changes.

Confirmation of the Key Opportunities by the EBOPJC is sought.

An implementation plan will be developed once feedback from the engagement process has been received. It will be structured around the Key Opportunities, and identify what needs to be actioned to achieve Eastern Bay – Beyond Today.

3.0 NEXT STEPS

The next steps in the process are summarised below:

Timeframe	Task
March – May 2016	<p>Engagement on Draft Eastern Bay – Beyond Today, with a focus on the Key Opportunities. Engagement will be aimed at key stakeholders, including:</p> <ul style="list-style-type: none"> • Iwi • Community Boards • Government agencies • Economic development agencies • Businesses and industry sector organisations <p>Key stakeholders will be invited to workshops to discuss: ‘Do you/your organisation agree with the Key Opportunities?’ ‘What needs to be done to realise the Key Opportunities?’</p>
8 June 2016	Update report to EBOP Joint Committee
June/July 2016	<p>Report back to Eastern Bay Spatial Plan Subcommittee with engagement feedback. Seek direction on possible updates to the documents in relation to the feedback.</p> <p>Develop Implementation Plan.</p> <p>Finalise documents and maps.</p>
7 September 2016	EBOP Joint Committee approve Eastern Bay – Beyond Today and recommend adoption by the partner councils.

4.0 RELEVANCE TO EASTERN BAY OF PLENTY

Eastern Bay – Beyond Today is spatial plan for the Eastern Bay. The spatial plan (or ‘development plans’) is to chart the 30-50 year vision for the area.

RECOMMENDATIONS:

1. **THAT** the report "Draft Eastern Bay – Beyond Today" be received.
2. **THAT** the Joint Committee approves Draft Eastern Bay – Beyond Today for release for engagement.
3. **THAT** the Joint Committee confirms the draft Key Opportunities.

David Phizacklea
Regional Integrated Planning Manager
Bay of Plenty Regional Council

Chris Jensen
Manager, Regulatory and Planning
Kawerau District Council

Barbara Dempsey
Planning and Regulatory Manager
Ōpōtiki District Council

David Bewley
General Manager Planning, Regulatory and
Corporate Services
Whakatāne District Council

3 March 2016

Document separate to this report • Draft Eastern Bay – Beyond Today



To: **EASTERN BAY OF PLENTY JOINT COMMITTEE**

Meeting Date: **9 MARCH 2016**

Written by: **ESTA FARQUHAR, PLANNER, BAY OF PLENTY REGIONAL COUNCIL**

Subject: **UPDATE ON CHANGES TO THE RESOURCE MANAGEMENT ACT**

1.0 EXECUTIVE SUMMARY

This report provides a summary of the Resource Legislation Amendment Bill 2015 which seek to reform the Resource Management Act (RMA). The Bill is aimed at delivering improvements to the Act, to create a resource management system that achieves the sustainable management of natural and physical resources in a more efficient and equitable way. The Local Government and Environment Select Committee will be receiving submissions on the Bill until 14 March 2016.

2.0 REASON FOR THE REPORT

The purpose of this report is to provide the EBOPJC with an overview of the Resource Legislation Amendment Bill and implications for councils associated with the reforms.

3.0 RESOURCE LEGISLATION AMENDMENT BILL

3.1 BACKGROUND

In 2008 the Government began a two phase reform of New Zealand's resource management system. The first phase of RMA reforms resulted in the Resource Management (Simplifying and Streamlining) Amendment Act 2009 and the Resource Management Amendment Act 2013. Changes to the Resource Management (Simplifying and Streamlining) Amendment Act 2009:

- streamlined and simplified the RMA
- improved how councils process resource consents
- set up a system that allows nationally significant consent applications to be dealt with more quickly.

The Government made further changes through the Resource Management Amendment Act 2013 to:

- improve the resource consent regime
- create a streamlined process for Auckland's first unitary plan
- set a six-month time limit for processing consents for medium-sized projects

- create easier direct referral to the Environment Court for major regional projects
- set up stronger requirements for councils to base their planning decisions on a robust and thorough evaluation of the benefits and costs.

In February 2013, the Government released a discussion document setting out further proposals on improving New Zealand's resource management system. These proposals have been considered and now some are being progressed as part of the second phase reform through the Resource Legislation Amendment Bill 2015.

3.2 OVERVIEW OF RESOURCE LEGISLATION AMENDMENT BILL

The Bill had its first reading on 3 December 2015 and was referred to the Local Government and Environment Select Committee for consideration. The overarching purpose of the Bill is to amend the Resource Management Act 1991, to create a resource management system that achieves the sustainable management of natural and physical resources in an efficient and equitable way. The Select Committee will be receiving submissions until 14 March 2016.

The Bill is a large complex document that is made up of over 200 individual amendments. However for the purposes of providing the Committee a summary we have grouped these changes into three common themes and subsequently outlined the most significant changes for Council.

- National direction
- Regional and district planning
- Resource consents

3.2.1 NATIONAL DIRECTION

The Bill contains a series of changes to the way the Government delivers national direction to councils. It sees the lack of national policy statements (NPSs), national environmental standards (NESs) has been a major factor in the 'individuality' of plans developed by each Council. That being said the Government will be stepping up the programme of national policy statements, national environmental standards, and national guidance to get better environmental results at less cost.

The Bill includes the following changes to how the Government delivers national direction to Councils:

- Changes to Part 2 of the RMA incorporating natural hazards as a matter of National Importance
- A new compulsory National Planning Template
- New regulation-making powers
- Minimising restrictions on land
- Changes to the processes for National Policy Statements (NPSs) and National Environmental Standards (NESs)
- New monitoring requirements.

3.2.2 REGIONAL AND DISTRICT PLANNING

The Government has been critical of the length of time taken to complete planning processes, including both new plans and changes to plans. The Government has also had concerns about the way councils exercise their planning functions. The Bill contains a series of changes which will affect the planning functions of councils, including:

- A new collaborative planning process
- A new streamlined planning process
- Increased Iwi participation and Iwi participation arrangements
- Requiring councils to seek approval to exceed planning timeframes
- Changes to the duties and functions of TAs and councils.
 - Removal of hazardous substance function
 - Ensure sufficient development capacity for residential and business land to meet long term demand.

3.2.3 RESOURCE CONSENTS

The Bill contains a large number of amendments to the resource consent process, some of which give significant new powers and obligations to consent authorities, applicants, submitters, and central government. These include:

- A 10-day 'fast track' pathway simple consent applications
- Powers for council to waive the need for consents in some circumstances
- A revised decision making regime for notification of applications
- New obligations for the content of submissions
- Mandatory tools for management of evidence in consent hearings
- Constraints around the scope of consent conditions
- Regulation-making powers including powers to
 - introduce a fixed fee regime
 - prescribe the form and content of discharge permits
 - Removal of the ability to charge a financial contribution on a resource consent

Significant additional changes to the consenting regime will affect developments managed by district councils in particular. All district land use activities and subdivisions will be affected by:

- New criteria controlling eligibility of individuals to be considered affected parties
- A new permitted activity pathway for certain activities that have written approvals
- Limited appeal rights for subdivisions and residential activities.

4.0 RELEVANCE TO EASTERN BAY OF PLENTY

The changes proposed in the Bill are the most substantial reform of the RMA since its inception and will affect how councils deliver their core business. The most significant changes for local authorities will be:

- Complying with a National Planning Template
- Implementing a range of new regulations
- Considering the use of the two new planning processes
- Implementing the changes to consent processes.

5.0 PROVIDING FEEDBACK

Given the scale of the changes proposed by the Bill, Regional Council will be preparing a submission on key areas. The submission will generally be supportive of the changes which aim to reduce unnecessary bureaucracy while still ensuring there are sufficient provisions to protect the environment. Regional Council will circulate its draft submission to the other councils.

One area of focus will be the potential effect of the provisions that purport to increase Māori participation. There is concern that the proposed amendment could impact on existing co-governance arrangements, such as the Rangitāiki River Forum, and treaty settlement legislation requirements.

Local Government NZ is also preparing a submission to the Bill on behalf of all councils and have sought feedback through Mayors, Chairs and Chief Executives as to a collective position on each change.

Submissions to the Bill close 14 March 2016.

6.0 RECOMMENDATION:

- 1. THAT the report titled "Update on Changes to the RMA" be received.**
- 2. THAT the EBOPJC notes the draft changes proposed by the Resource Legislation Amendment Bill 2015 and any implications of this reform as outlined in this report.**

David Phizacklea
Regional Integrated Planning Manager
Bay of Plenty Regional Council

Julie Gardyne
General Manager Strategy and Community
Whakatāne District Council

Barbara Dempsey
Planning and Regulatory Manager
Ōpōtiki District Council

Chris Jensen
Manager, Regulatory and Planning
Kawerau District Council

3 March 2016



To: **EASTERN BAY OF PLENTY JOINT COMMITTEE**

Meeting Date: **9 MARCH 2016**

Written by: **KEN TARBOTON AND JULIE GARDYNE**

Subject: **2016 FIELD TRIPS**

8.0 EXECUTIVE SUMMARY

Two field trips are planned for the Eastern Bay Joint Committee for 2016. Dates are in the process of being finalised. The first trip would include Whakatane District and the second would be to points of interest in the region that are of significance to the Eastern Bay but located outside of the Eastern Bay.

9.0 RELEVANCE TO EASTERN BAY OF PLENTY

To provide an opportunity for the Eastern Bay of Plenty Joint Committee members to gain a better understanding of issues of significance to the Eastern Bay.

10.0 DETAILS

Details of the two proposed field trips are as follows:

10.1 Whakatāne District Council Tour

Proposed date 10 May 2016.

Tentative sights of interest to visit include

- Extreme or Surtees boat building
- White Island Tours micro village
- Airport/Air Chathams – update on their first year of operation
- District Plan changes (including residential opportunities/ retirement village)
- Whakatāne harbour and surrounds (Centennial Park, hikoi, commercial wharf, Quay St wharf developments)

10.2 Regional Tour

Date to be decided in August or early September 2016

Tentative sights of interest to visit include

- Rangiora development and Quayside investments briefing
- Port of Tauranga
- Waikato University Marine Centre

- Tauranga Marine Precinct
- Rena status/update (possibly)

11.0 DISCUSSION

Members are invited to review the possible proposed sights of interest for these two tours and provide feedback on locations/sights that should be included of excluded from the trips.

RECOMMENDATION:

1. **THAT** the report "2016 Field Trips" be received; and
3. **THAT** additional suggestions on other sights to visit or sights to exclude be noted.

Ken Tarboton
Eastern Bay Area Manager
Bay of Plenty Regional Council

Julie Gardyne
General Manager Strategy and Community
Whakatāne District Council

3 March 2016



To: **EASTERN BAY OF PLENTY JOINT COMMITTEE**

Meeting Date: **9 MARCH 2016**

Written by: **BARBARA DEMPSEY, PLANNING AND REGULATORY MANAGER**

Subject: **2016 AGENDA REPORTS**

1.0 REASON FOR THE REPORT

To provide an outline of proposed agenda report for the 2016 calendar year.

2.0 DISCUSSION

Attached to this report is a list of reports that will be presented to the Joint Committee over the next twelve months. It is considered that these reports are of a strategic nature and are of interest and relevance to the wider eastern bay.

The list is not exhaustive and during the year other topics will need to be discussed. However, it is important that we attempt to scope the workload early to give staff an opportunity to prepare reports.

Please give some consideration to the list and highlight any other topics that should be included.

RECOMMENDATION:

1. **THAT** the report "Full Name of Report as above" be received.
2. **THAT** the following topics be included on the future reports to the Eastern Bay of Plenty agendas:

Barbara Dempsey
PLANNING AND REGULATORY
MANAGER

3 March 2016

Attached to this report: • Agenda Reports for the Eastern Bay of Plenty Joint Committee

EASTERN BAY JOINT COMMITTEE

Agenda Reports as follows:

Items for March Meeting
Tour of Whakatāne and Regional tour
Pathways to Work
Eastern Bay – Beyond Today
Regional Action Plan
Update on changes to RMA
Harbour Update
Future Meetings
Local Government Futures
Water – Update every second meeting
District Road Networks – Collaboration considerations
Health and Safety
Container Terminal
Eastern Bay Tourism
Eastern Bay – Beyond Today (regular update)
Regional Spatial Planning
Cycle Strategy
Rural Fire – Update on changes to legislation
Harbour Update
Sub Regional Economic development
Solid Waste
Treaty Landscape
Rangitāiki Floodway project
Bylaws: Collaboration considerations
District Health Board – Presentation by Board Members